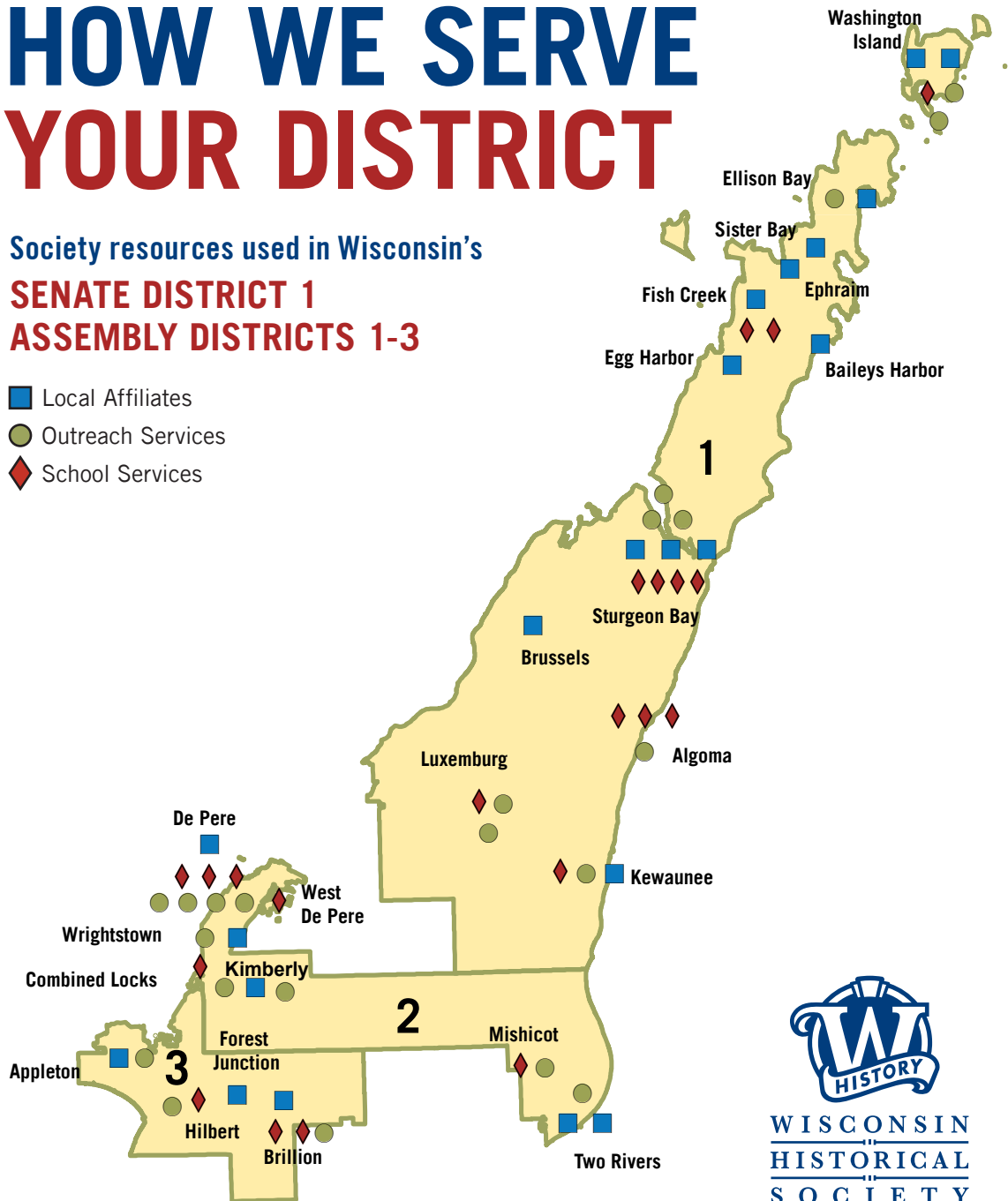


HOW WE SERVE YOUR DISTRICT

Society resources used in Wisconsin's

SENATE DISTRICT 1 ASSEMBLY DISTRICTS 1-3

- Local Affiliates
- Outreach Services
- ◆ School Services



OUTREACH SERVICES

19

Local History
Affiliates served

168,307

Sessions engaging the services through the
Wisconsin Historical Society's website.

SCHOOL SERVICES

20

School districts used the Society's
4th-grade Wisconsin history textbook
and visited a museum.

1,747

Students used the Society's 4th-grade
Wisconsin history textbook, visited a museum,
or participated in National History Day.

Due to the re-opening of sites and programming after COVID-19, operations at the Society and outreach across the state are slowly continuing to return to normal service.

SOURCES: WISCONSIN HISTORICAL SOCIETY, LEGISLATIVE TECHNOLOGY SERVICES BUREAU (LTSB), GOOGLE ANALYTICS

HOW WE SERVE YOUR DISTRICT

Society resources used in Wisconsin's

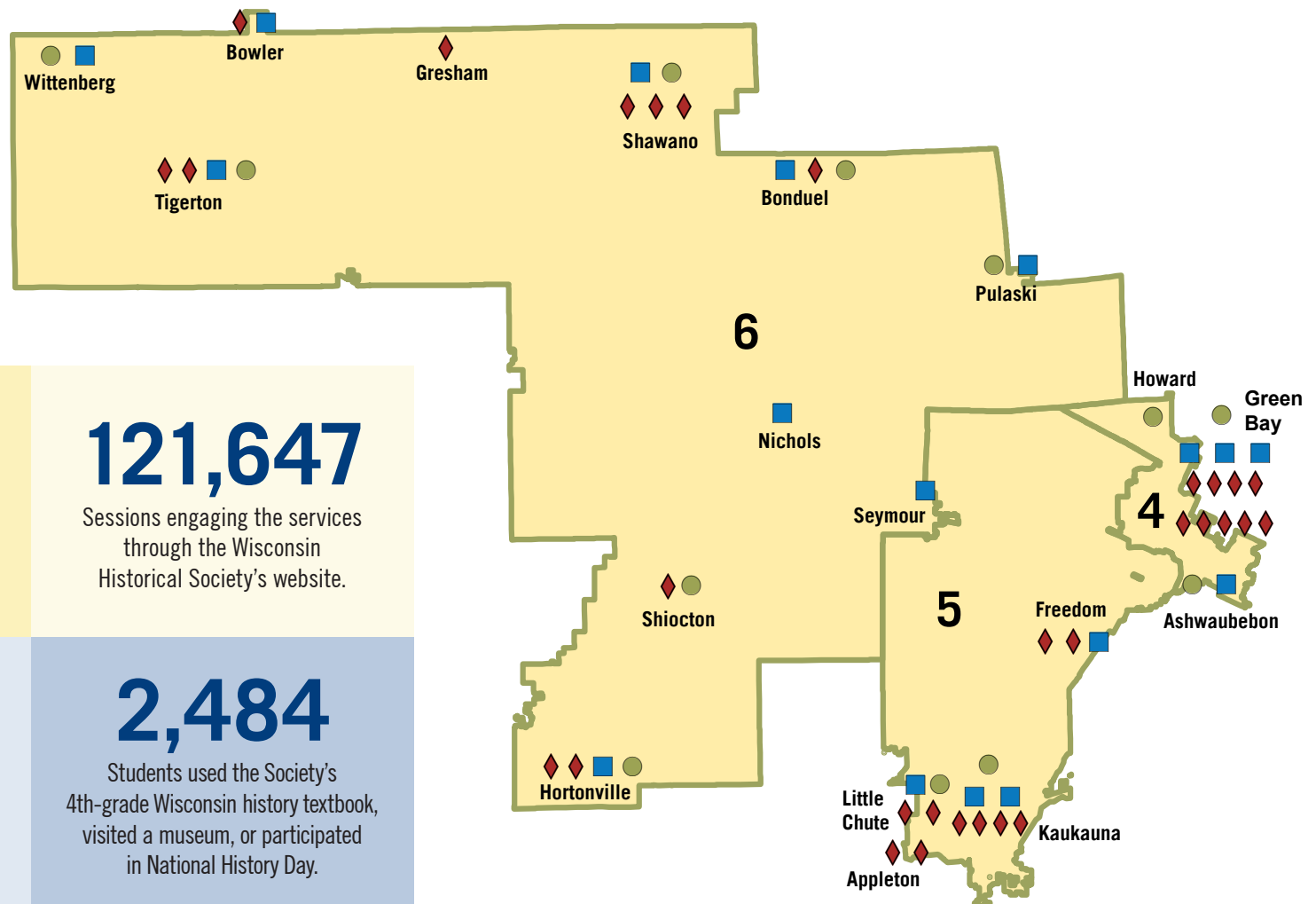
SENATE DISTRICT 2

ASSEMBLY DISTRICTS 4-6

Local Affiliates

Outreach Services

Schools Visiting Museums or Historic Sites



OUTREACH SERVICES	21	121,647
	Local History Affiliates served	Sessions engaging the services through the Wisconsin Historical Society's website.
SCHOOL SERVICES	27	2,484
	School districts used the Society's 4th-grade Wisconsin history textbook, participated in National History Day and visited a museum.	Students used the Society's 4th-grade Wisconsin history textbook, visited a museum, or participated in National History Day.

Due to the re-opening of sites and programming after COVID-19, operations at the Society and outreach across the state are slowly continuing to return to normal service.

SOURCES: WISCONSIN HISTORICAL SOCIETY, LEGISLATIVE TECHNOLOGY SERVICES BUREAU (LTSB), GOOGLE ANALYTICS

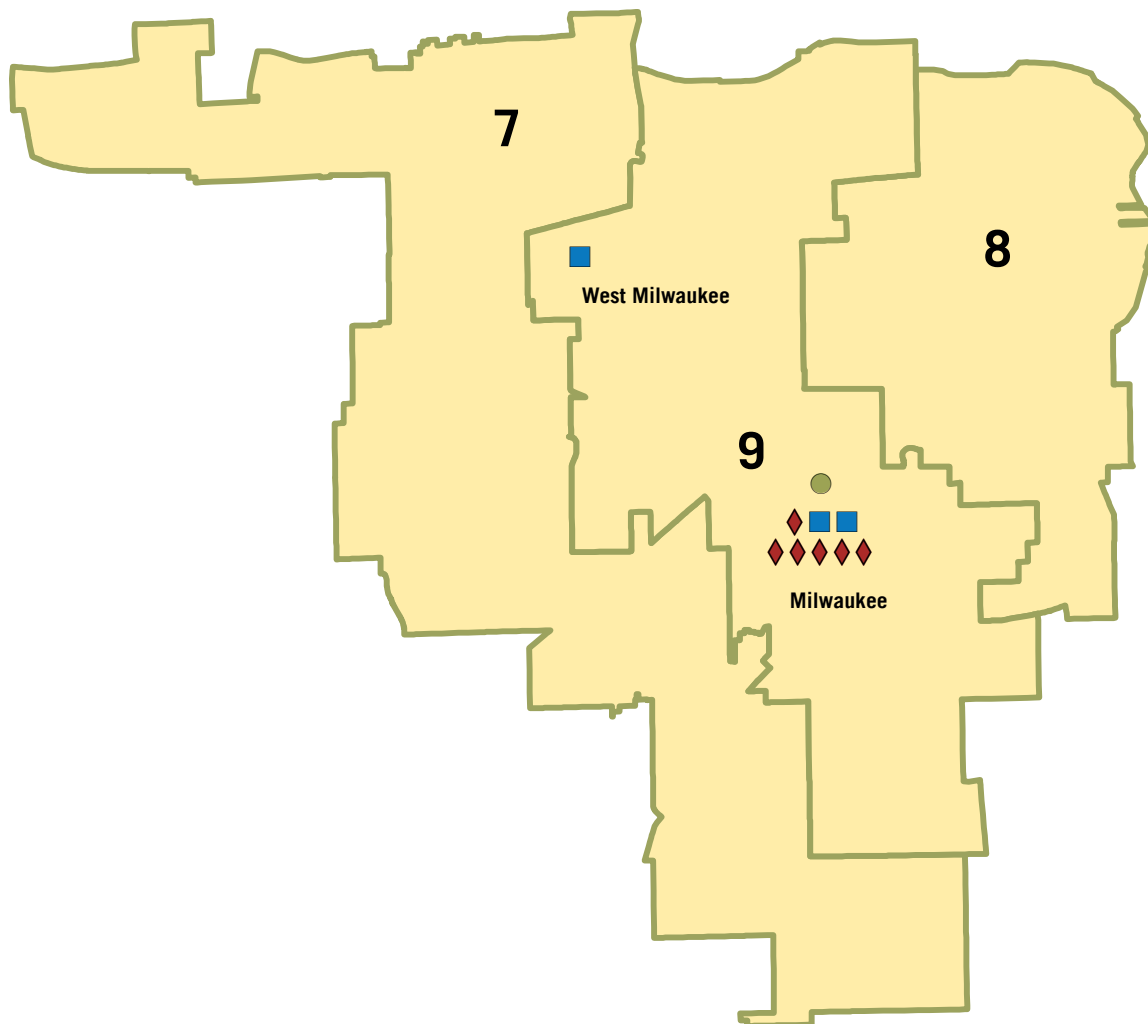
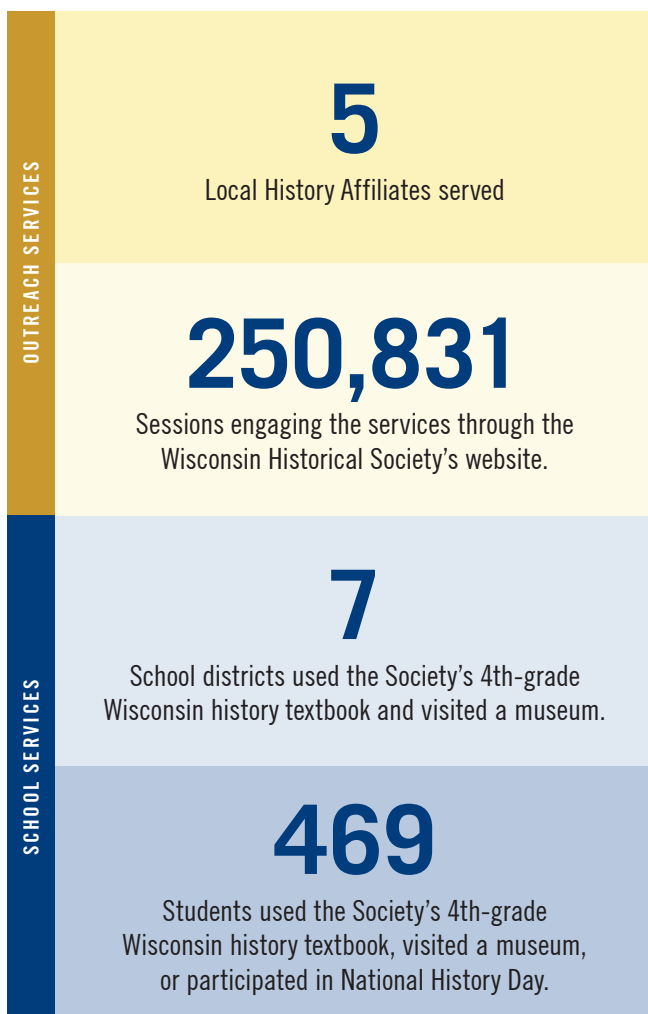
HOW WE SERVE YOUR DISTRICT



WISCONSIN
HISTORICAL
SOCIETY

Society resources used in Wisconsin's
SENATE DISTRICT 3
ASSEMBLY DISTRICTS 7-9

- Local Affiliates
- Outreach Services
- Schools Visiting Museums or Historic Sites



Due to the re-opening of sites and programming after COVID-19, operations at the Society and outreach across the state are slowly continuing to return to normal service.

SOURCES: WISCONSIN HISTORICAL SOCIETY, LEGISLATIVE TECHNOLOGY SERVICES BUREAU (LTSB), GOOGLE ANALYTICS

HOW WE SERVE YOUR DISTRICT



WISCONSIN
HISTORICAL
SOCIETY

Society resources used in Wisconsin's

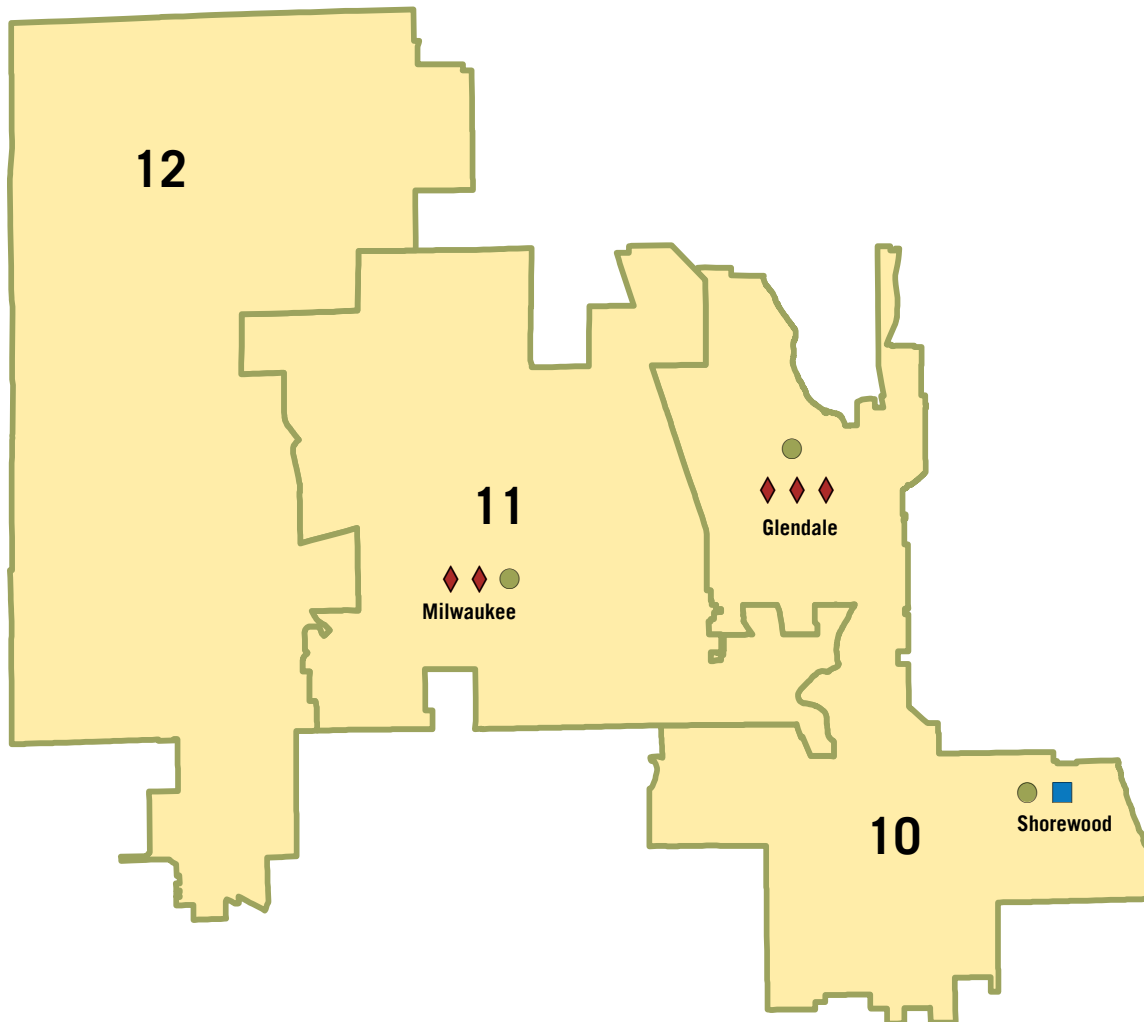
SENATE DISTRICT 4

ASSEMBLY DISTRICTS 10-12

Local Affiliates

Outreach Services

Schools Visiting Museums or Historic Sites



OUTREACH SERVICES

195,159

Sessions engaging the services through the Wisconsin Historical Society's website.

SCHOOL SERVICES

3

School districts used the Society's 4th-grade Wisconsin history textbook and visited a museum.

198

Students used the Society's 4th-grade Wisconsin history textbook, visited a museum, or participated in National History Day.

Due to the re-opening of sites and programming after COVID-19, operations at the Society and outreach across the state are slowly continuing to return to normal service.

SOURCES: WISCONSIN HISTORICAL SOCIETY, LEGISLATIVE TECHNOLOGY SERVICES BUREAU (LTSB), GOOGLE ANALYTICS

HOW WE SERVE YOUR DISTRICT



WISCONSIN
HISTORICAL
SOCIETY

Society resources used in Wisconsin's

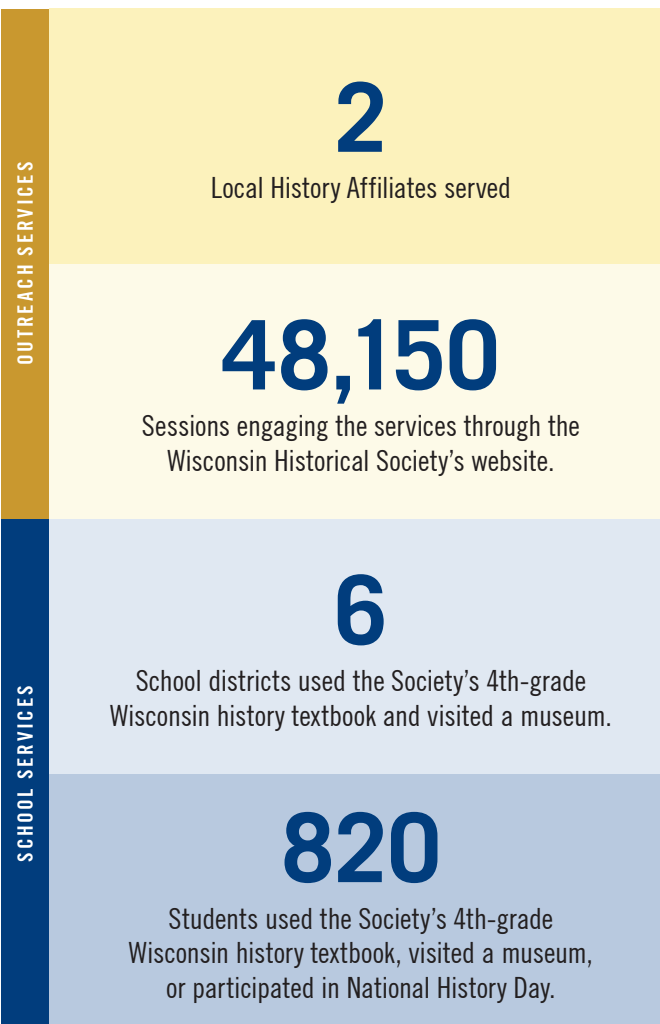
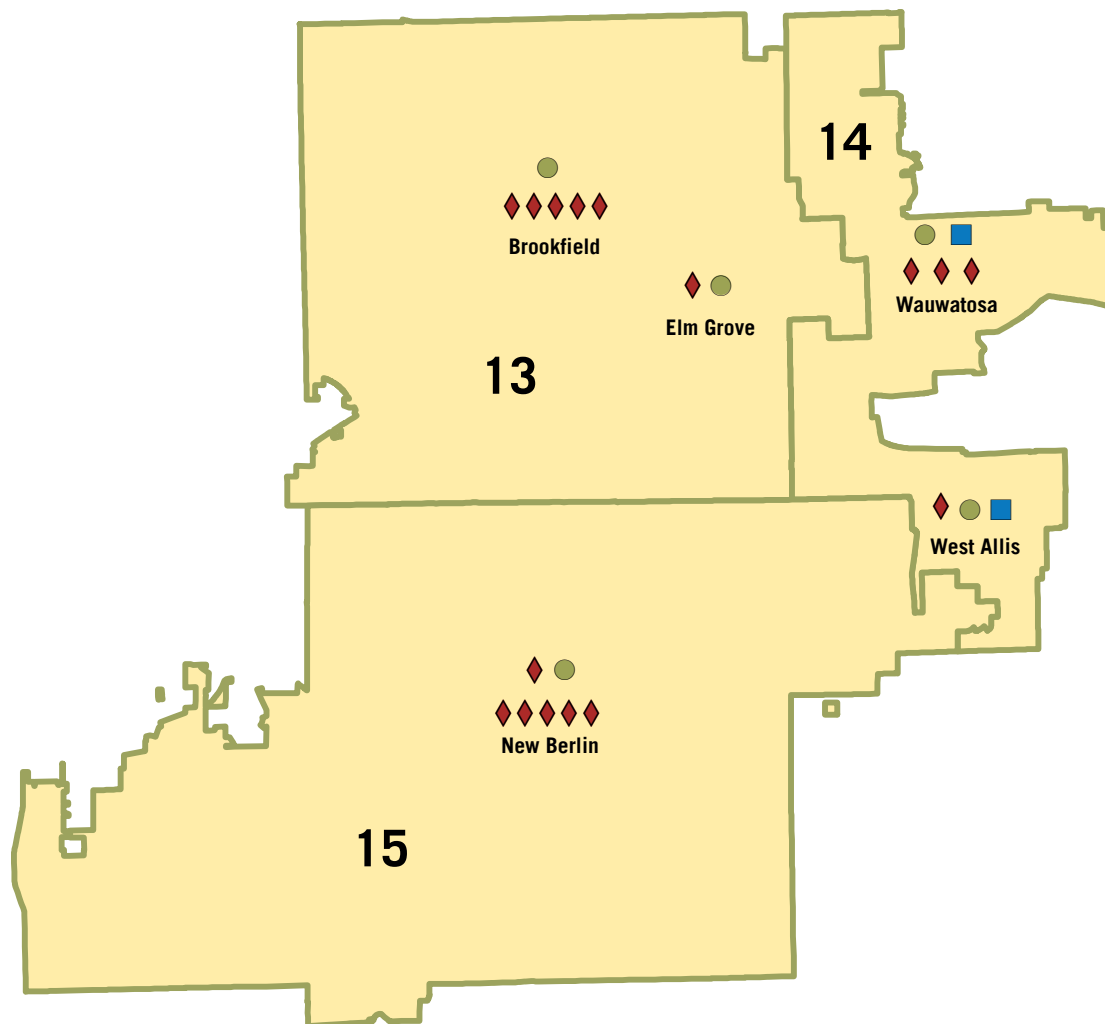
SENATE DISTRICT 5

ASSEMBLY DISTRICTS 13-15

Local Affiliates

Outreach Services

Schools Visiting Museums or Historic Sites



Due to the re-opening of sites and programming after COVID-19, operations at the Society and outreach across the state are slowly continuing to return to normal service.

SOURCES: WISCONSIN HISTORICAL SOCIETY, LEGISLATIVE TECHNOLOGY SERVICES BUREAU (LTSB), GOOGLE ANALYTICS

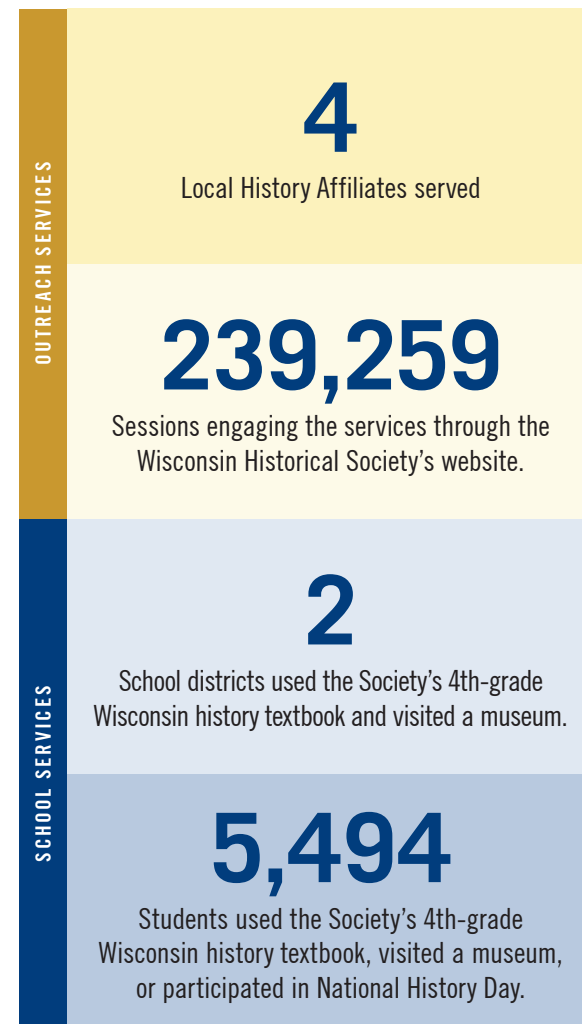
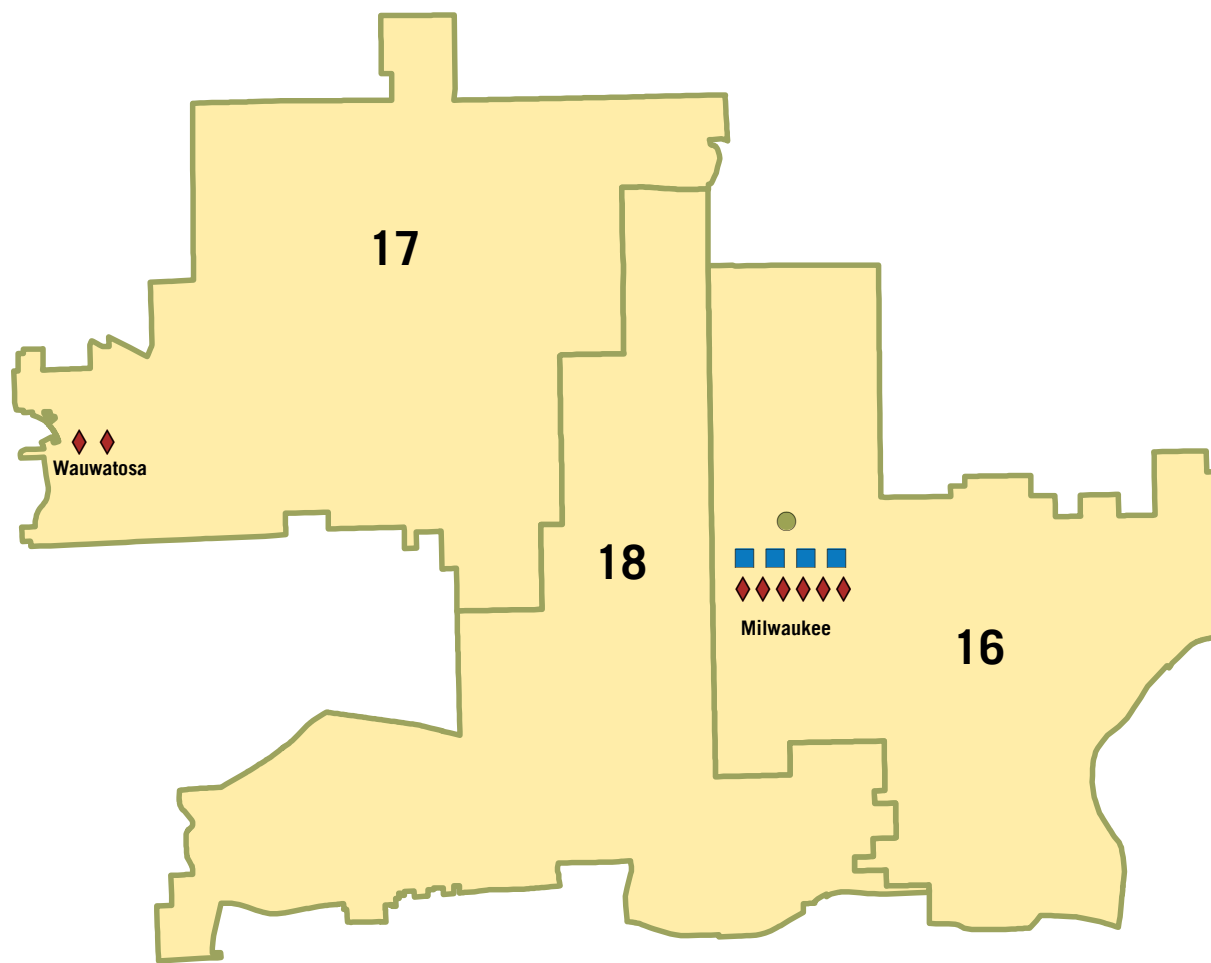
HOW WE SERVE YOUR DISTRICT



WISCONSIN
HISTORICAL
SOCIETY

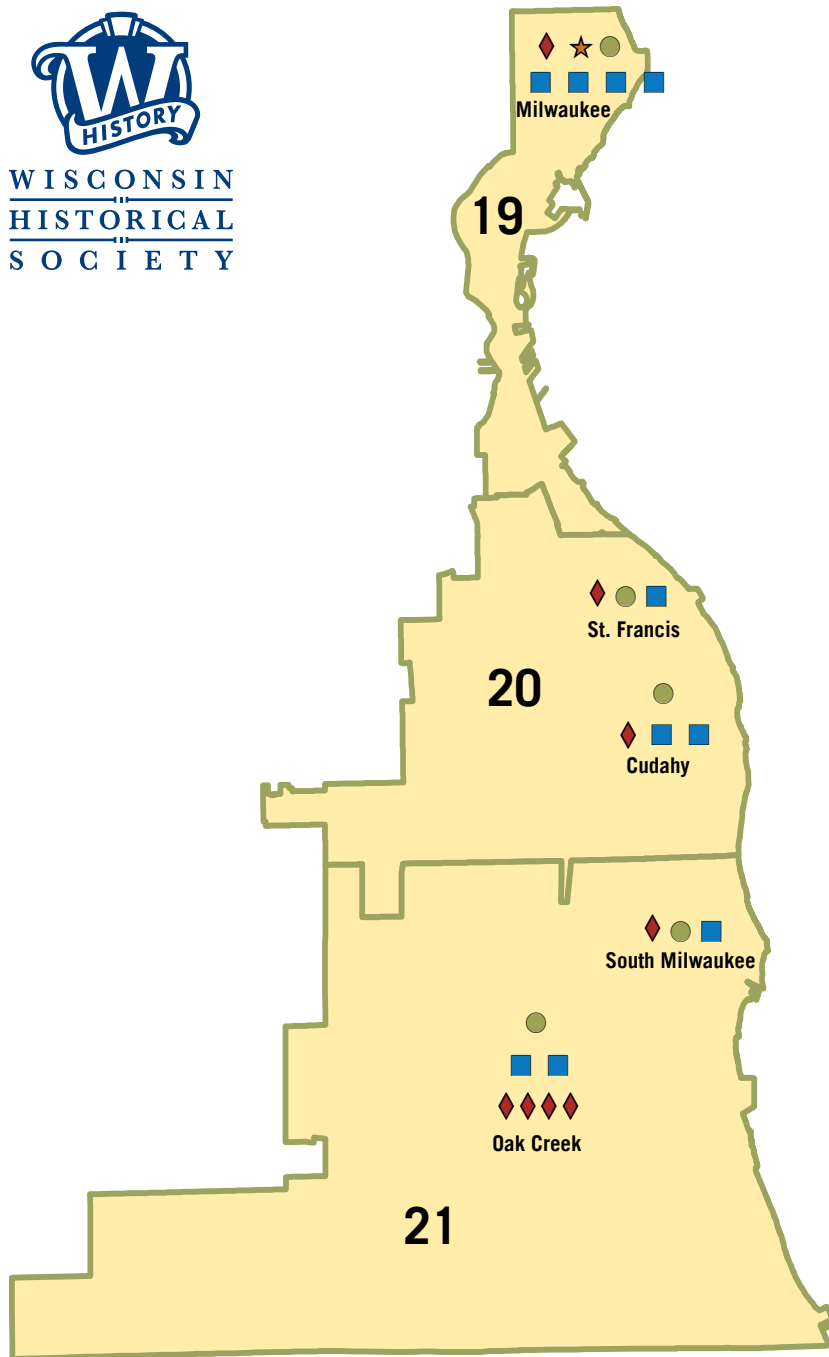
Society resources used in Wisconsin's
SENATE DISTRICT 6
ASSEMBLY DISTRICTS 16-18

- Local Affiliates
- Outreach Services
- Schools Visiting Museums or Historic Sites



Due to the re-opening of sites and programming after COVID-19, operations at the Society and outreach across the state are slowly continuing to return to normal service.

SOURCES: WISCONSIN HISTORICAL SOCIETY, LEGISLATIVE TECHNOLOGY SERVICES BUREAU (LTSB), GOOGLE ANALYTICS



HOW WE SERVE YOUR DISTRICT

Society resources used in Wisconsin's

SENATE DISTRICT 7 | ASSEMBLY DISTRICTS 19-21

■ Local Affiliates

● Outreach Services

★ Area Research Center

◆ Schools Visiting Museums or Historic Sites



Due to the re-opening of sites and programming after COVID-19, operations at the Society and outreach across the state are slowly continuing to return to normal service.

SOURCES: WISCONSIN HISTORICAL SOCIETY, LEGISLATIVE TECHNOLOGY SERVICES BUREAU (LTSB), GOOGLE ANALYTICS

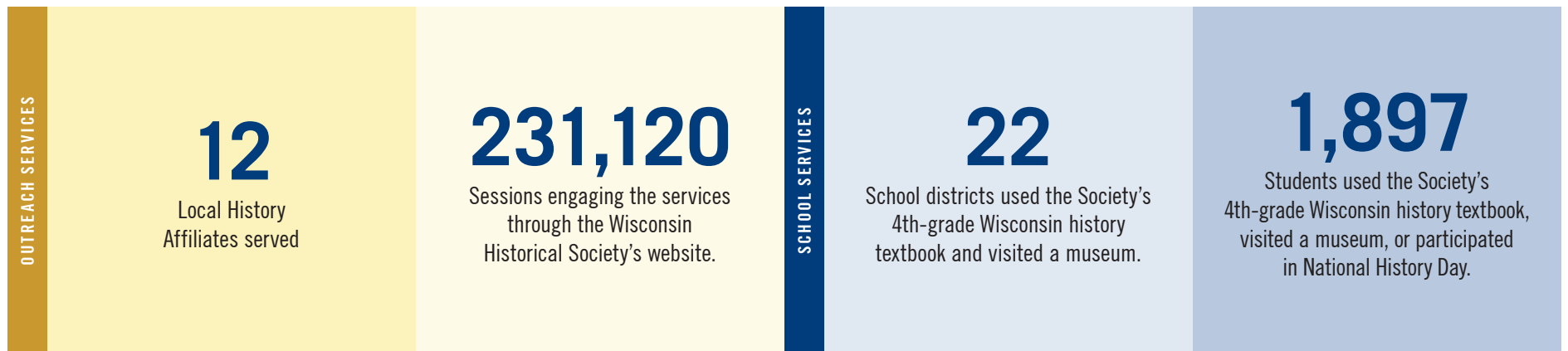
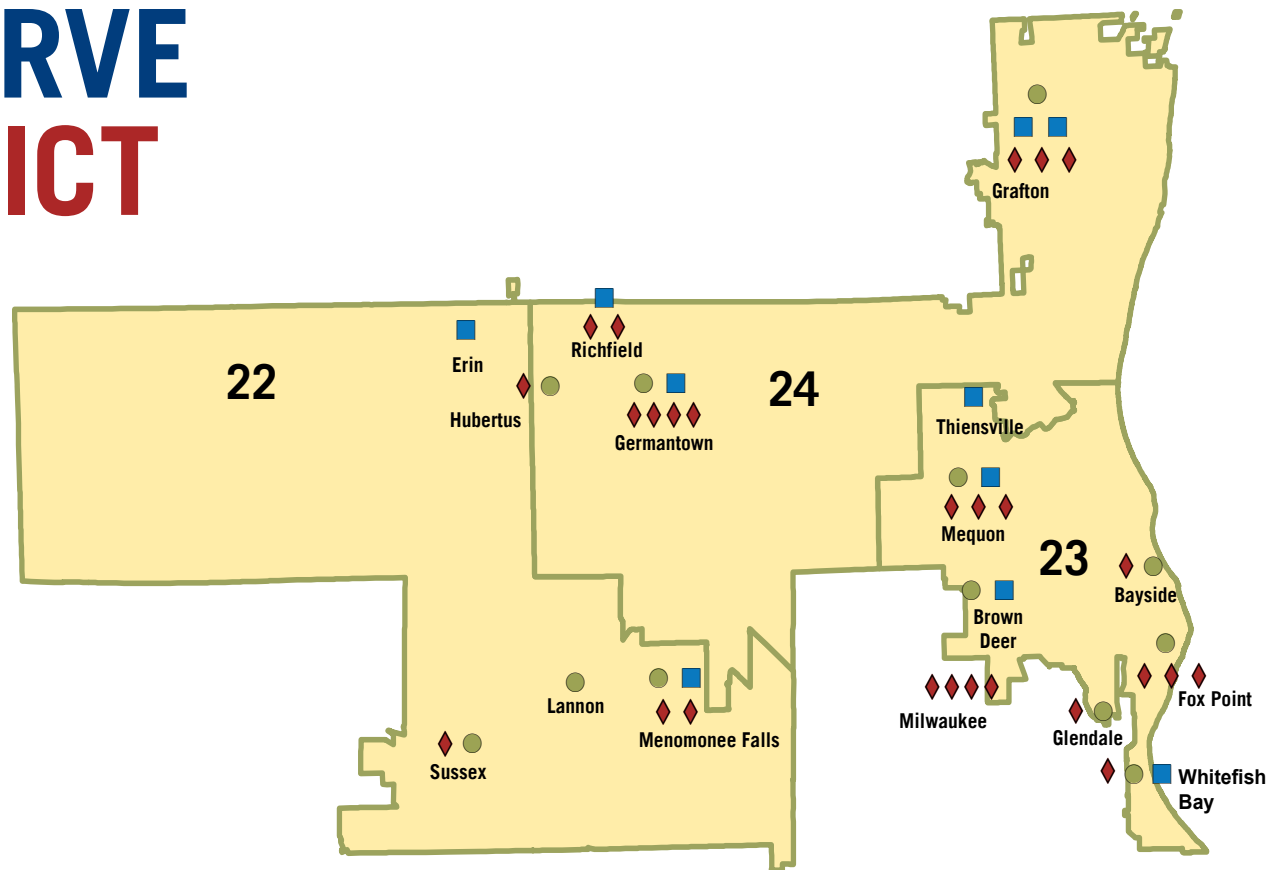
HOW WE SERVE YOUR DISTRICT

Society resources used in Wisconsin's
SENATE DISTRICT 8
ASSEMBLY DISTRICTS 22-24

- Local Affiliates
- Outreach Services
- ◆ Schools Visiting Museums or Historic Sites



WISCONSIN
HISTORICAL
SOCIETY



Due to the re-opening of sites and programming after COVID-19, operations at the Society and outreach across the state are slowly continuing to return to normal service.

SOURCES: WISCONSIN HISTORICAL SOCIETY, LEGISLATIVE TECHNOLOGY SERVICES BUREAU (LTSB), GOOGLE ANALYTICS

HOW WE SERVE YOUR DISTRICT

Society resources used in Wisconsin's

SENATE DISTRICT 9

ASSEMBLY DISTRICTS 25-27

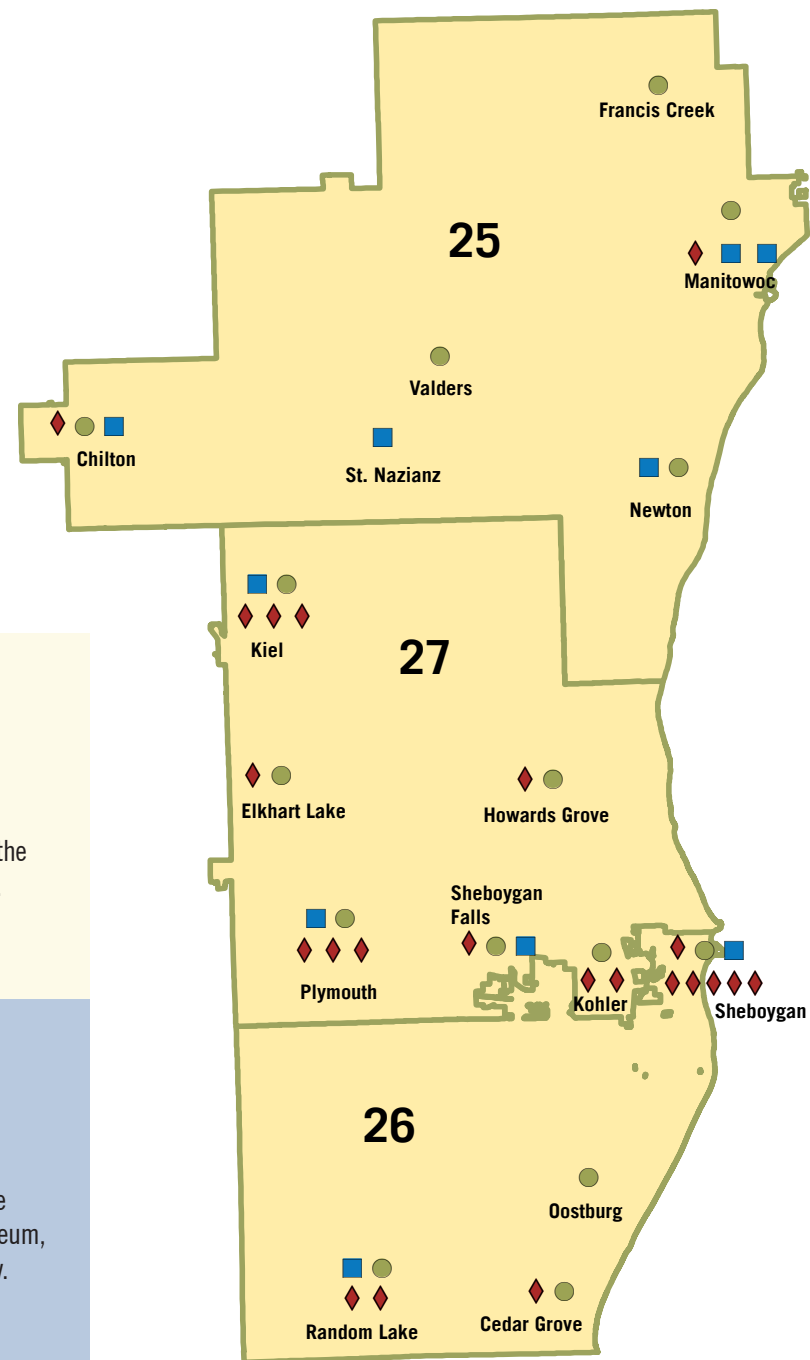
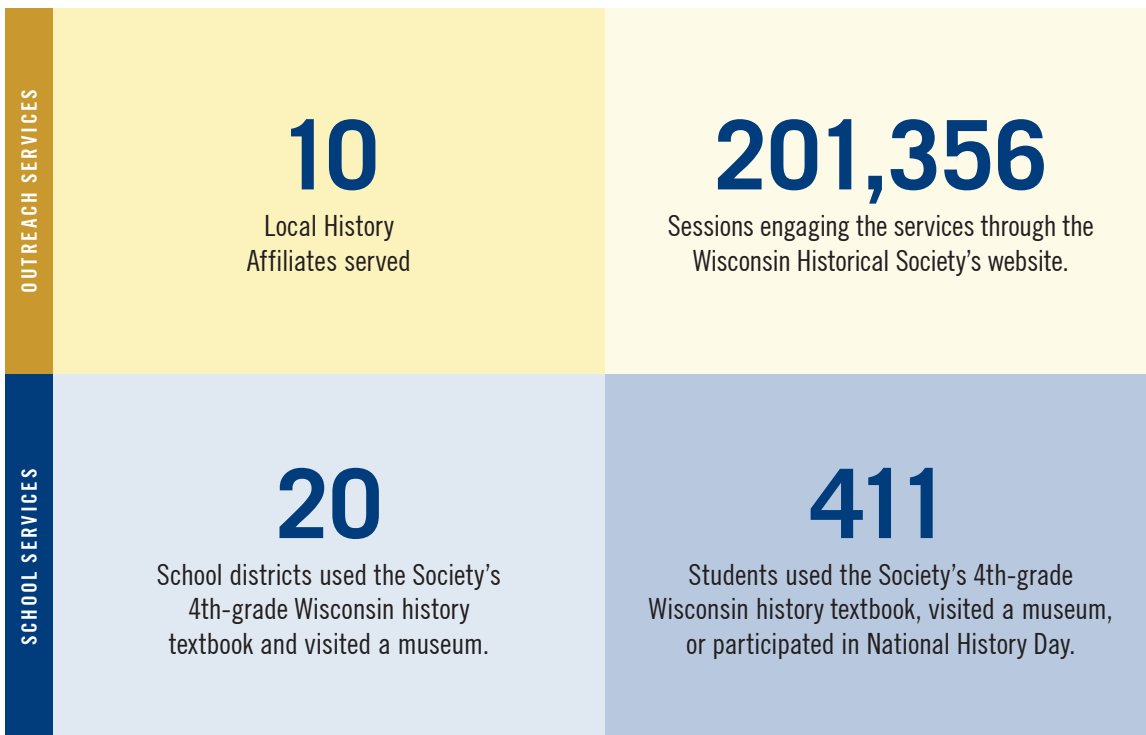
■ Local Affiliates

● Outreach Services

◆ Schools Visiting Museums or Historic Sites



WISCONSIN
HISTORICAL
SOCIETY



Due to the re-opening of sites and programming after COVID-19, operations at the Society and outreach across the state are slowly continuing to return to normal service.

SOURCES: WISCONSIN HISTORICAL SOCIETY, LEGISLATIVE TECHNOLOGY SERVICES BUREAU (LTSB), GOOGLE ANALYTICS

HOW WE SERVE YOUR DISTRICT

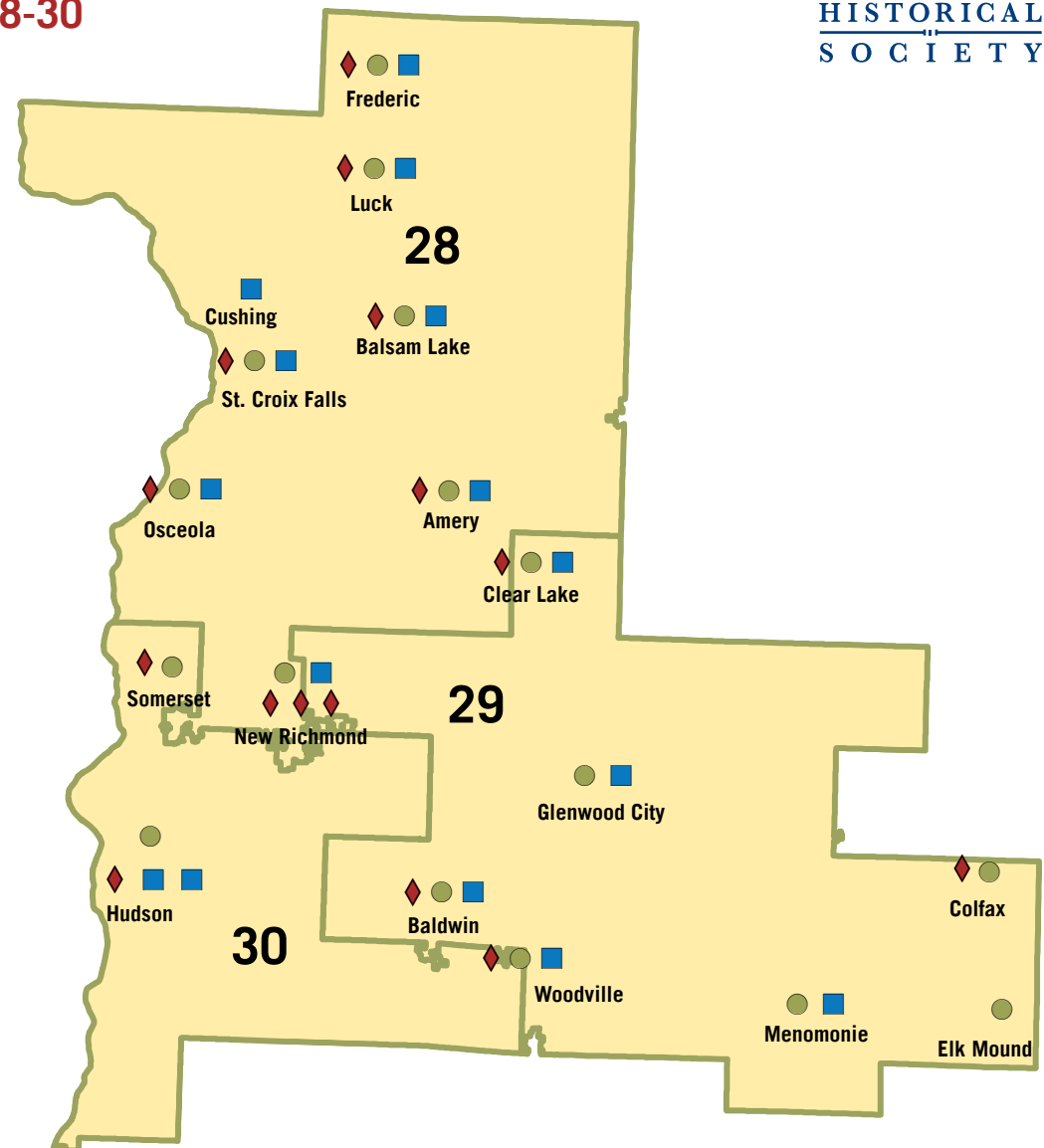
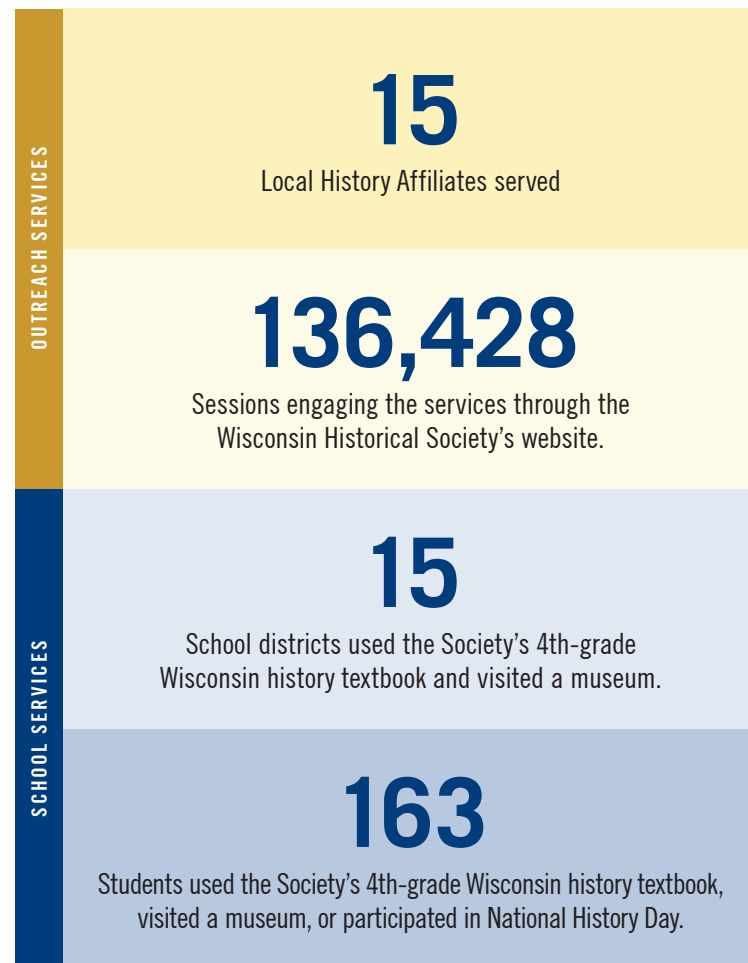


WISCONSIN
HISTORICAL
SOCIETY

Society resources used in Wisconsin's

SENATE DISTRICT 10 | ASSEMBLY DISTRICTS 28-30

- Local Affiliates
- Outreach Services
- ◆ Schools Visiting Museums or Historic Sites



Due to the re-opening of sites and programming after COVID-19, operations at the Society and outreach across the state are slowly continuing to return to normal service.

SOURCES: WISCONSIN HISTORICAL SOCIETY, LEGISLATIVE TECHNOLOGY SERVICES BUREAU (LTSB), GOOGLE ANALYTICS

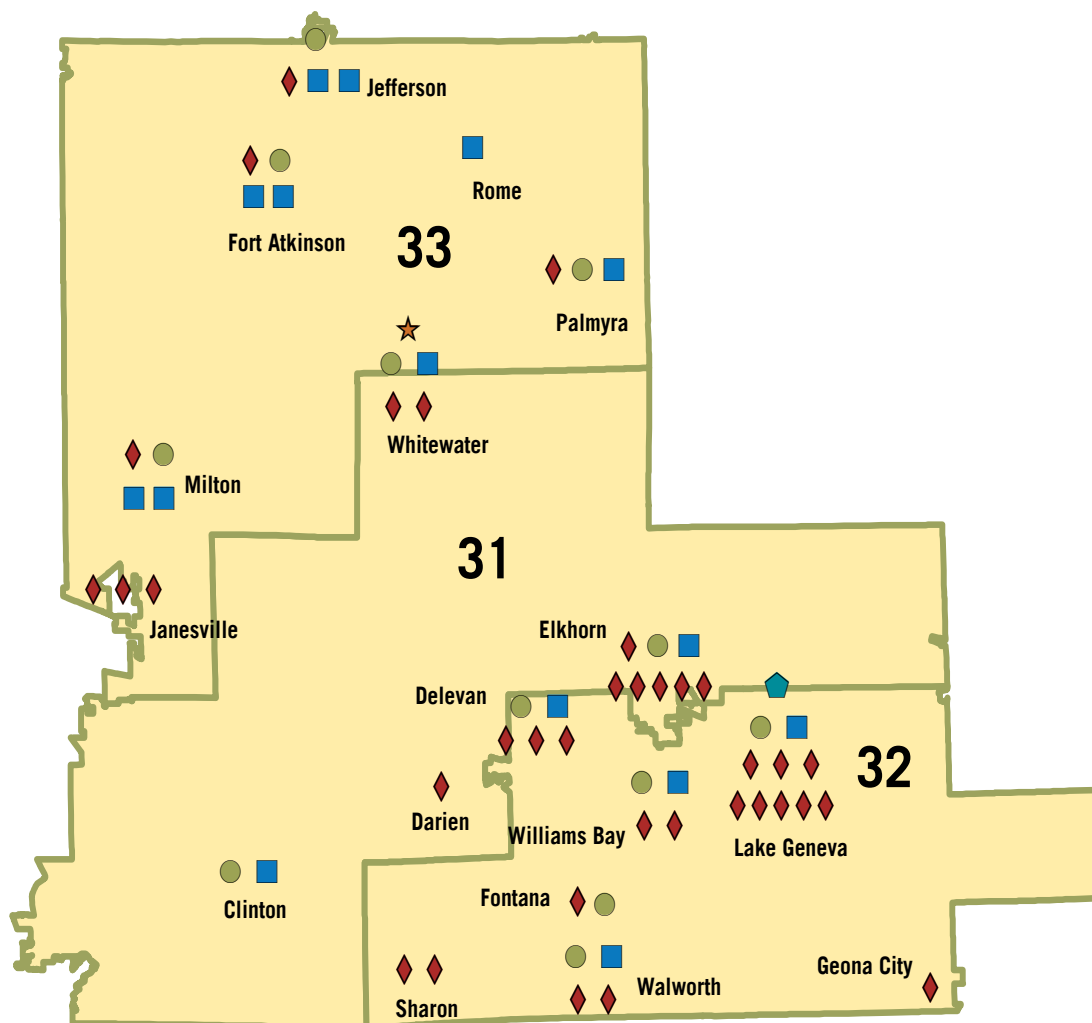
HOW WE SERVE YOUR DISTRICT



WISCONSIN
HISTORICAL
SOCIETY

Society resources used in Wisconsin's SENATE DISTRICT 11 ASSEMBLY DISTRICTS 31-33

- Local Affiliates
- Outreach Services
- ◆ Schools Visiting Museums or Historic Sites
- ◆ Society Museum or Historic Site
- ★ Area Research Center



OUTREACH SERVICES	1 Area Research Center (Whitewater)	1 Museum Site (Black Point Estate & Gardens)
	14 Local History Affiliates served	190,751 Sessions engaging the services through the Wisconsin Historical Society's website.
SCHOOL SERVICES	19 School districts used the Society's 4th-grade Wisconsin history textbook and visited a museum.	774 Students used the Society's 4th-grade Wisconsin history textbook, visited a museum, or participated in National History Day.

Due to the re-opening of sites and programming after COVID-19, operations at the Society and outreach across the state are slowly continuing to return to normal service.

SOURCES: WISCONSIN HISTORICAL SOCIETY, LEGISLATIVE TECHNOLOGY SERVICES BUREAU (LTSB), GOOGLE ANALYTICS

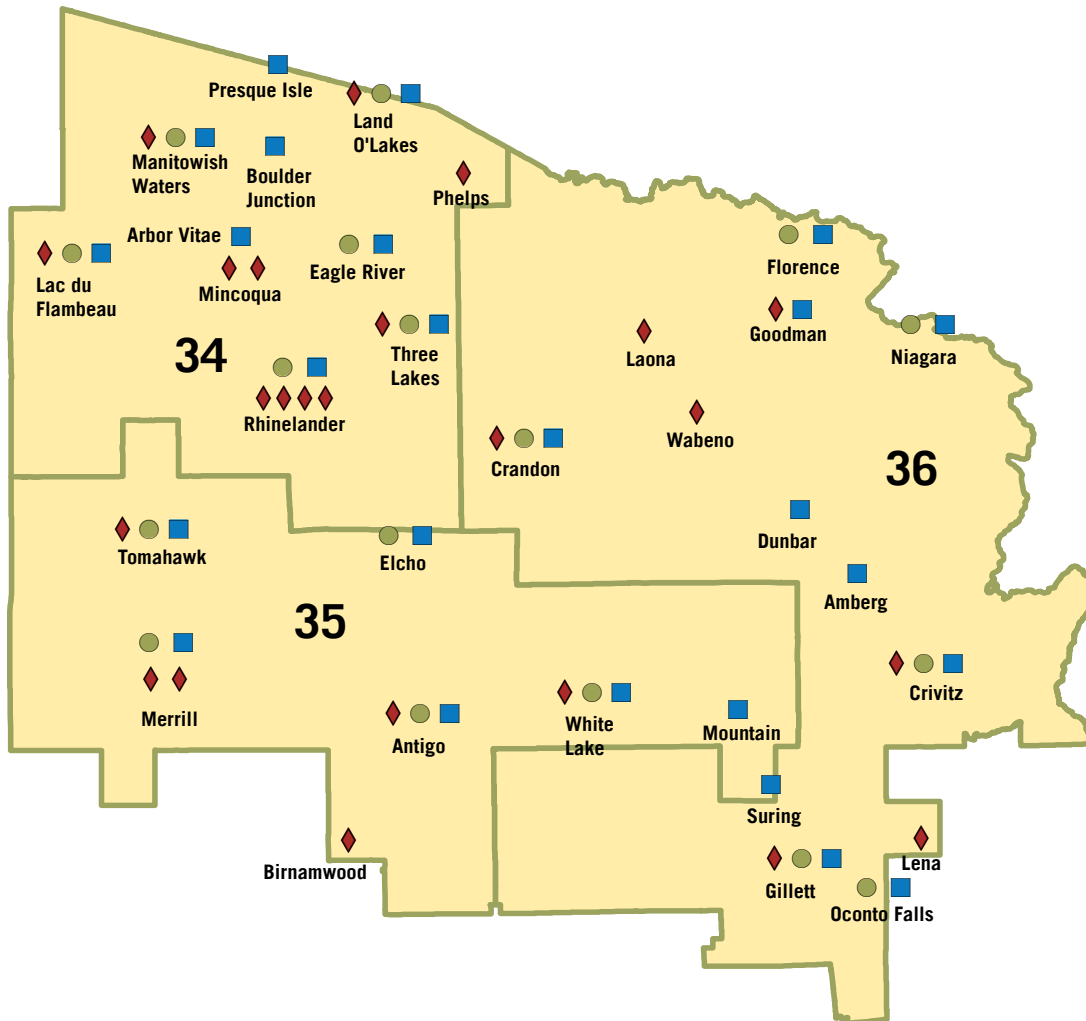
HOW WE SERVE YOUR DISTRICT



WISCONSIN
HISTORICAL
SOCIETY

Society resources used in Wisconsin's
SENATE DISTRICT 12
ASSEMBLY DISTRICTS 34-36

- Local Affiliates
- Outreach Services
- Schools Visiting Museums or Historic Sites



27

Local History Affiliates served

154,586

Sessions engaging the services through the Wisconsin Historical Society's website.

25

School districts used the Society's 4th-grade Wisconsin history textbook and visited a museum.

1,394

Students used the Society's 4th-grade Wisconsin history textbook, visited a museum, or participated in National History Day.

Due to the re-opening of sites and programming after COVID-19, operations at the Society and outreach across the state are slowly continuing to return to normal service.

SOURCES: WISCONSIN HISTORICAL SOCIETY, LEGISLATIVE TECHNOLOGY SERVICES BUREAU (LTSB), GOOGLE ANALYTICS

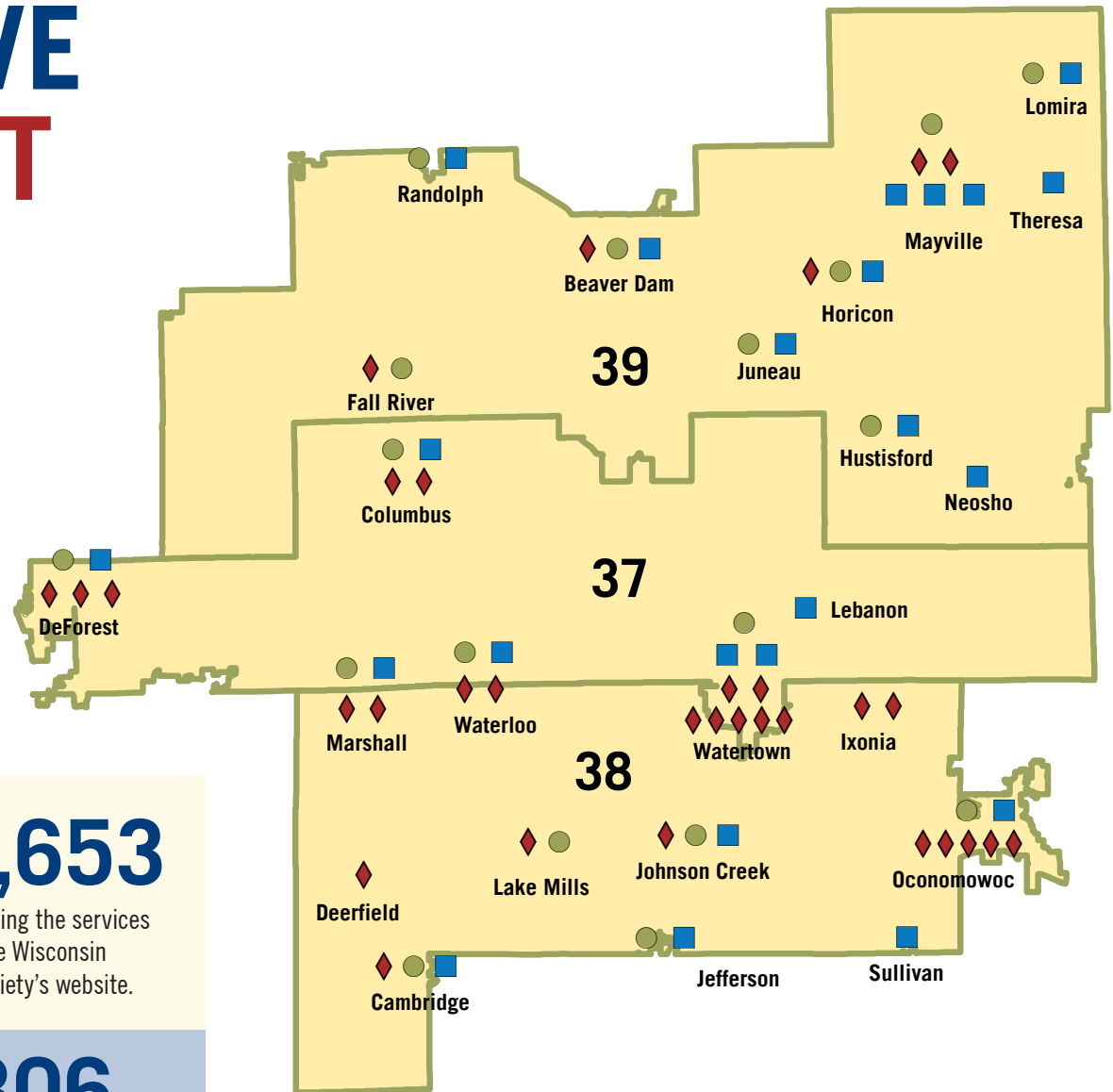
HOW WE SERVE YOUR DISTRICT

Society resources used in Wisconsin's

SENATE DISTRICT 13

ASSEMBLY DISTRICTS 37-39

- Local Affiliates
- Outreach Services
- ◆ Schools Visiting Museums or Historic Sites



OUTREACH SERVICES	23	304,653
	Local History Affiliates served	Sessions engaging the services through the Wisconsin Historical Society's website.
SCHOOL SERVICES	26	2,306
	School districts used the Society's 4th-grade Wisconsin history textbook and visited a museum.	Students used the Society's 4th-grade Wisconsin history textbook, visited a museum, or participated in National History Day.



**WISCONSIN
HISTORICAL
SOCIETY**

Due to the re-opening of sites and programming after COVID-19, operations at the Society and outreach across the state are slowly continuing to return to normal service.

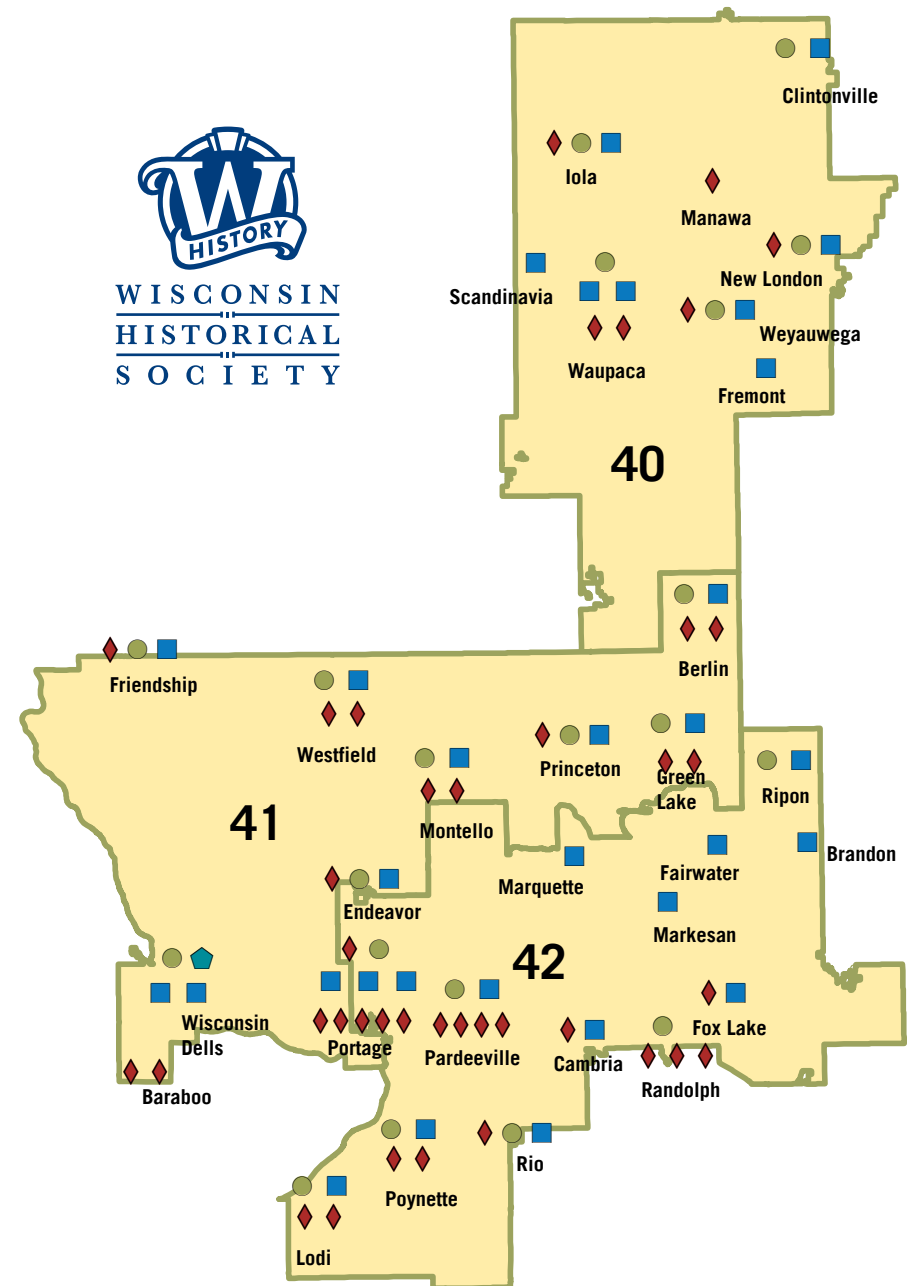
SOURCES: WISCONSIN HISTORICAL SOCIETY, LEGISLATIVE TECHNOLOGY SERVICES BUREAU (LTSB), GOOGLE ANALYTICS

HOW WE SERVE YOUR DISTRICT

Society resources used in Wisconsin's

SENATE DISTRICT 14 | ASSEMBLY DISTRICTS 40-42

- Local Affiliates ◆ Schools Visiting Museums or Historic Sites
- Outreach Services ◆ Society Museum or Historic Site



Due to the re-opening of sites and programming after COVID-19, operations at the Society and outreach across the state are slowly continuing to return to normal service.

SOURCES: WISCONSIN HISTORICAL SOCIETY, LEGISLATIVE TECHNOLOGY SERVICES BUREAU (LTSB), GOOGLE ANALYTICS

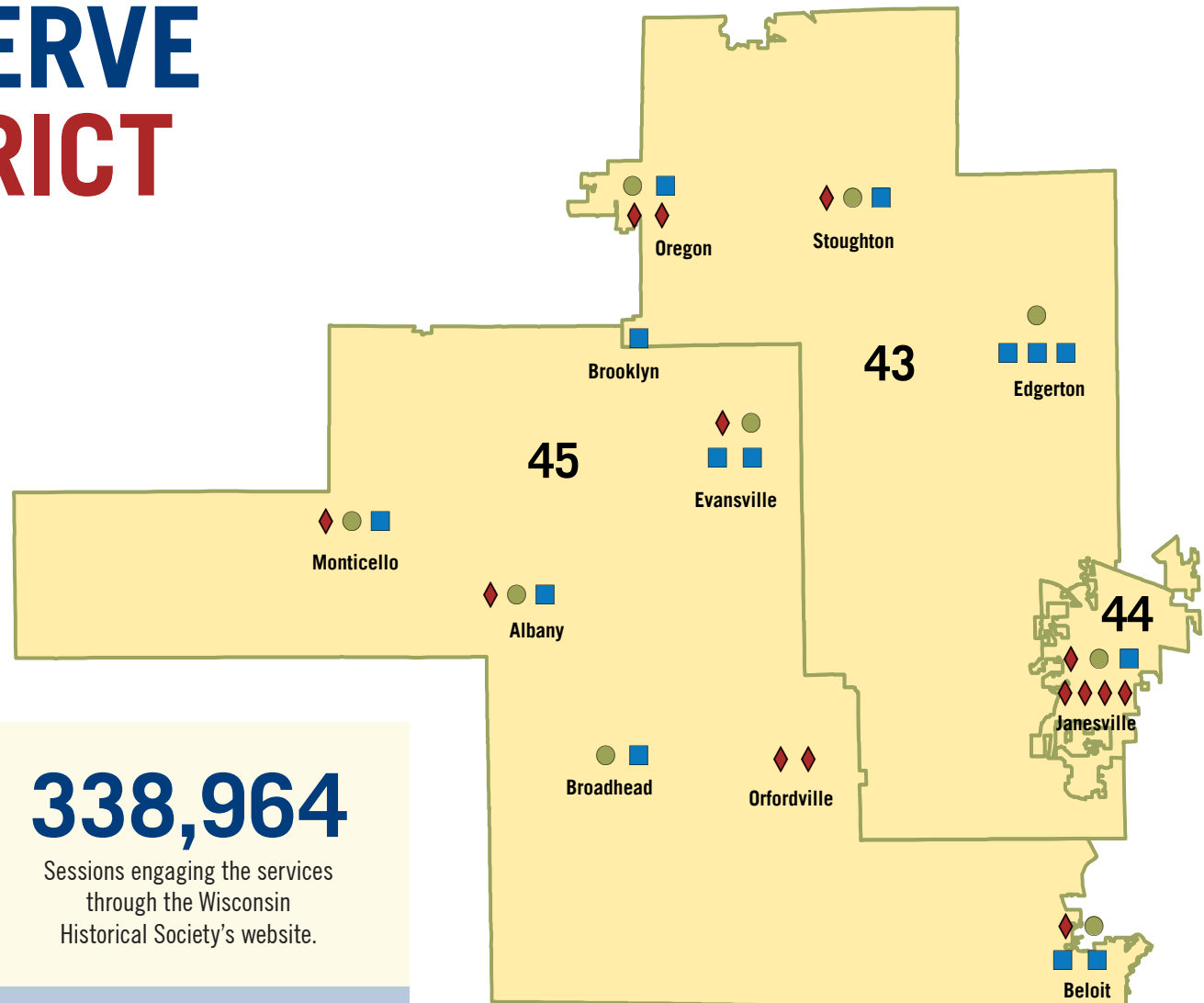
HOW WE SERVE YOUR DISTRICT

Society resources used in Wisconsin's

SENATE DISTRICT 15

ASSEMBLY DISTRICTS 43-45

- Local Affiliates
- Outreach Services
- ◆ Society Museum or Historic Site



OUTREACH SERVICES	15 Local History Affiliates served	338,964 Sessions engaging the services through the Wisconsin Historical Society's website.
	12 School districts used the Society's 4th-grade Wisconsin history textbook and visited a museum.	1,981 Students used the Society's 4th-grade Wisconsin history textbook, visited a museum, or participated in National History Day.
SCHOOL SERVICES		



WISCONSIN
HISTORICAL
SOCIETY

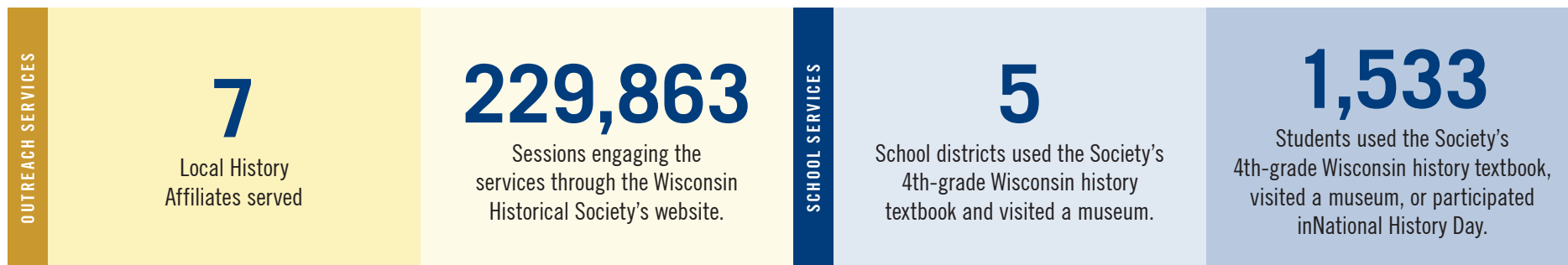
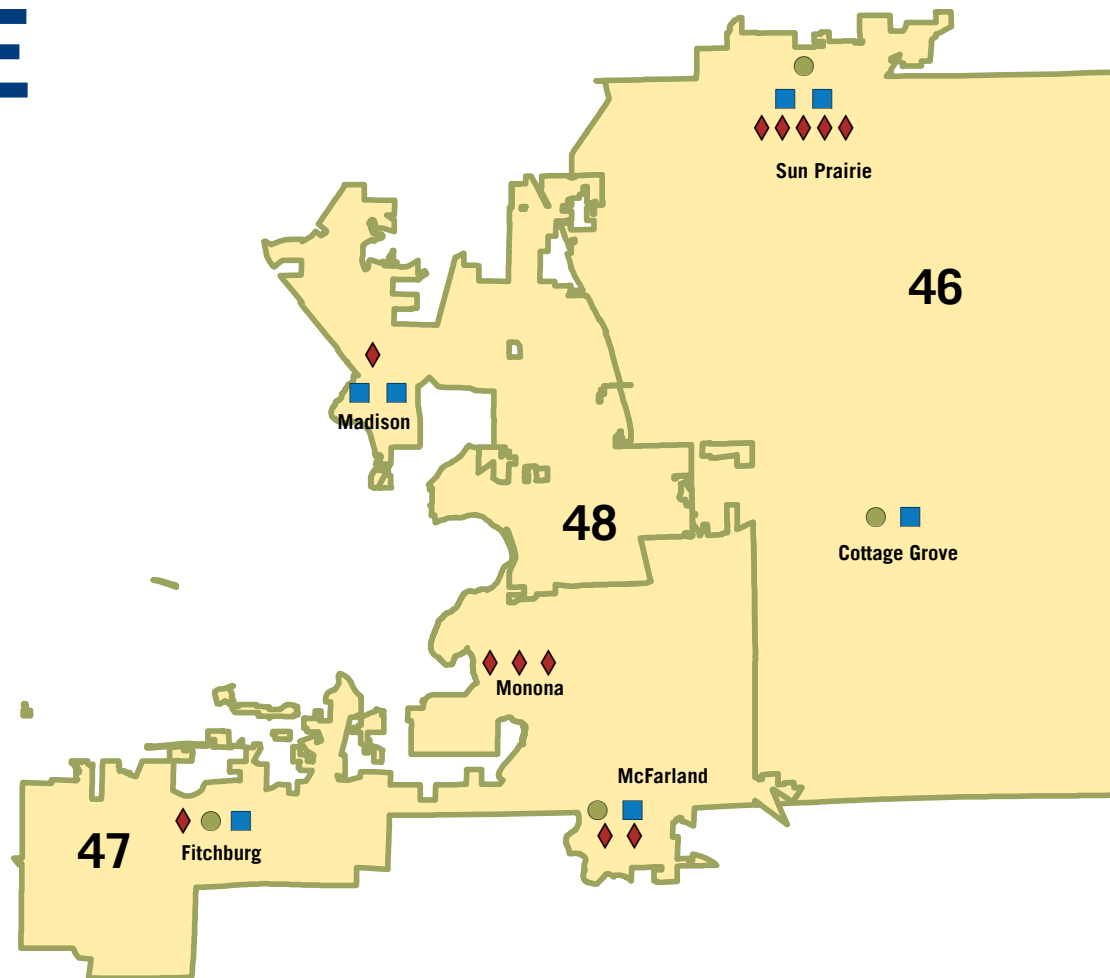
Due to the re-opening of sites and programming after COVID-19, operations at the Society and outreach across the state are slowly continuing to return to normal service.

SOURCES: WISCONSIN HISTORICAL SOCIETY, LEGISLATIVE TECHNOLOGY SERVICES BUREAU (LTSB), GOOGLE ANALYTICS

HOW WE SERVE YOUR DISTRICT

Society resources used in Wisconsin's
SENATE DISTRICT 16
ASSEMBLY DISTRICTS 46-48

- Local Affiliates
- Outreach Services
- Schools Visiting Museums or Historic Sites



Due to the re-opening of sites and programming after COVID-19, operations at the Society and outreach across the state are slowly continuing to return to normal service.

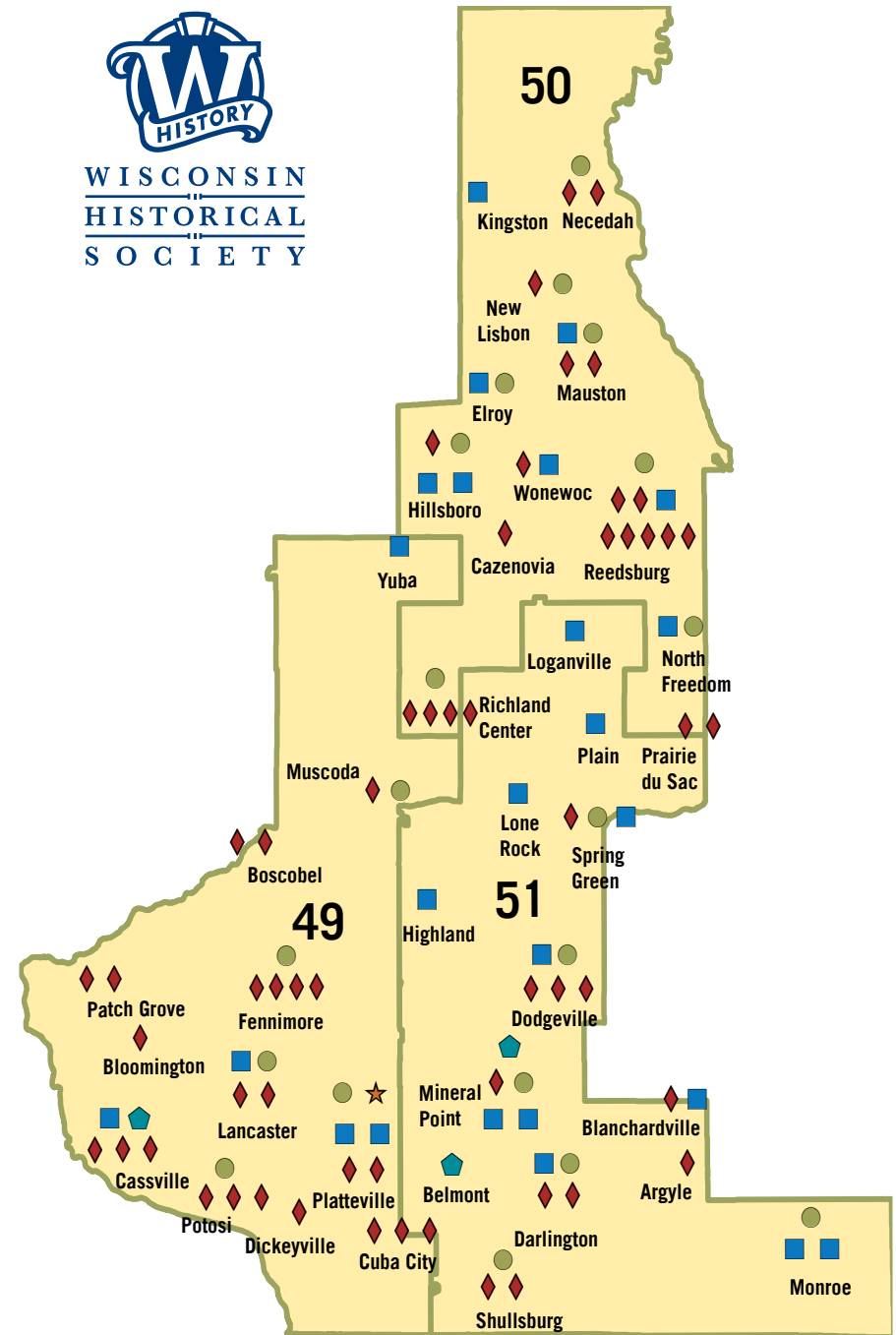
SOURCES: WISCONSIN HISTORICAL SOCIETY, LEGISLATIVE TECHNOLOGY SERVICES BUREAU (LTSB), GOOGLE ANALYTICS

HOW WE SERVE YOUR DISTRICT

Society resources used in Wisconsin's

SENATE DISTRICT 17 | ASSEMBLY DISTRICTS 49-51

- Local Affiliates
- Outreach Services
- ★ Area Research Center
- ◆ Schools Visiting Museums or Historic Sites
- ◆ Society Museum or Historic Site



Due to the re-opening of sites and programming after COVID-19, operations at the Society and outreach across the state are slowly continuing to return to normal service.

SOURCES: WISCONSIN HISTORICAL SOCIETY, LEGISLATIVE TECHNOLOGY SERVICES BUREAU (LTSB), GOOGLE ANALYTICS

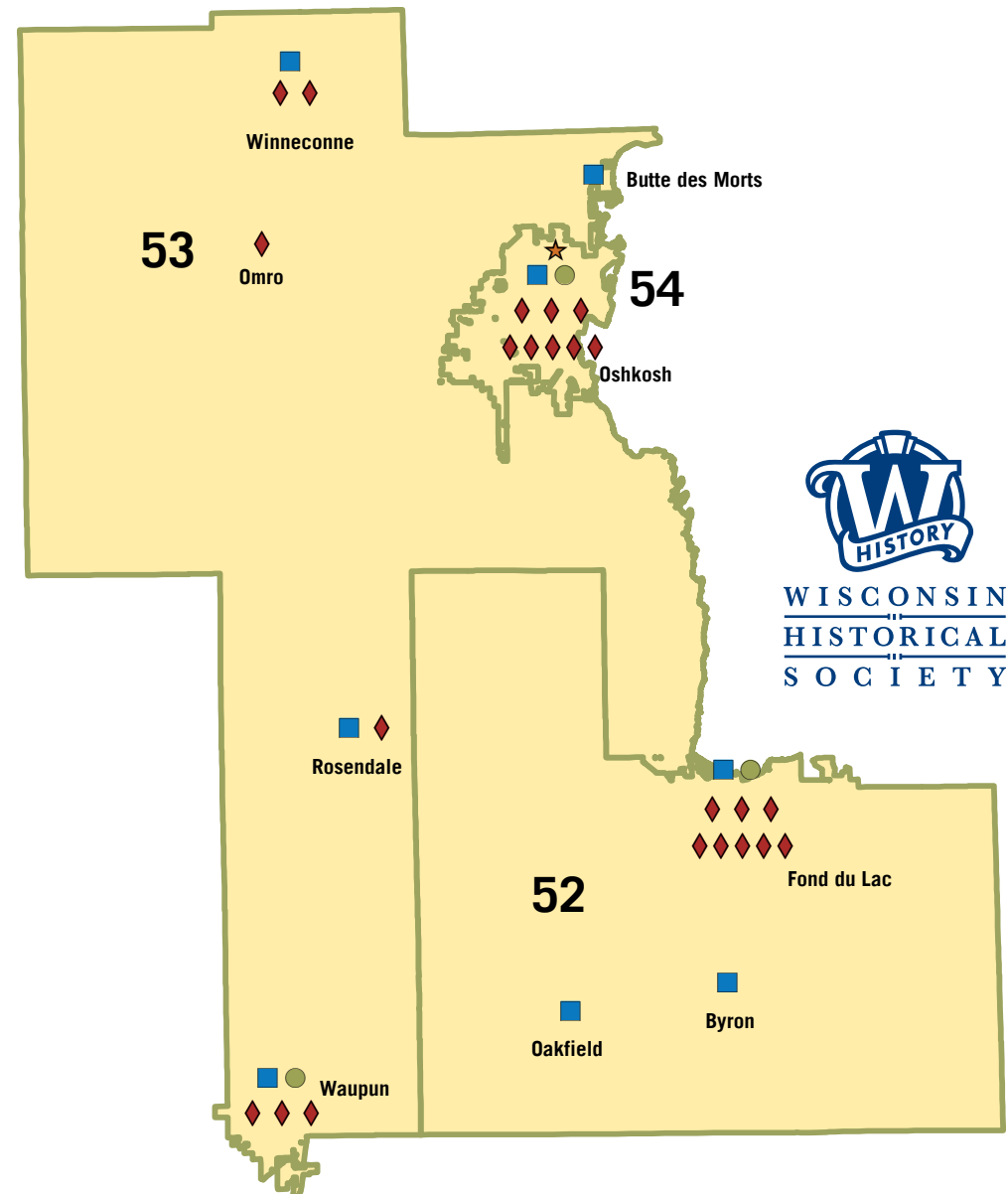
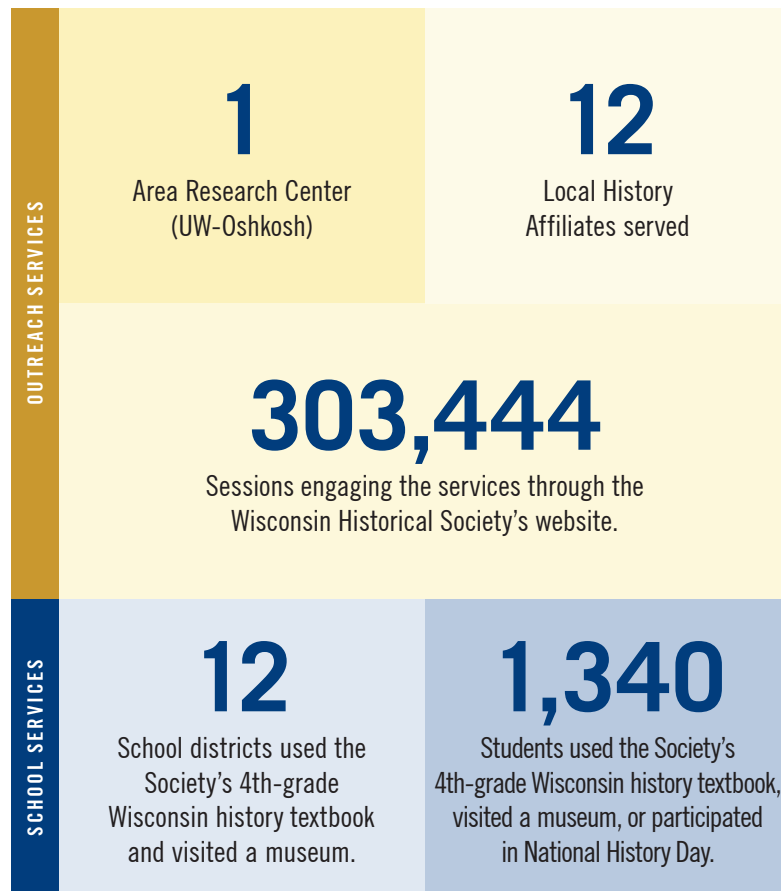
HOW WE SERVE YOUR DISTRICT

Society resources used in Wisconsin's

SENATE DISTRICT 18

ASSEMBLY DISTRICTS 52-54

- Local Affiliates
- ◆ Schools Visiting Museums or Historic Sites
- Outreach Services
- ★ Area Research Center



Due to the re-opening of sites and programming after COVID-19, operations at the Society and outreach across the state are slowly continuing to return to normal service.

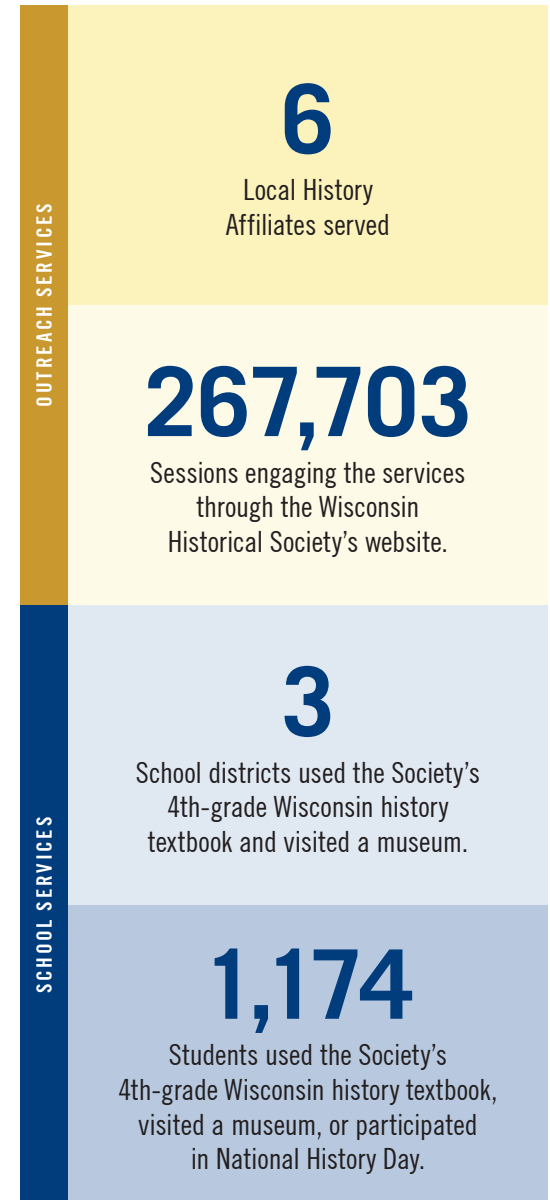
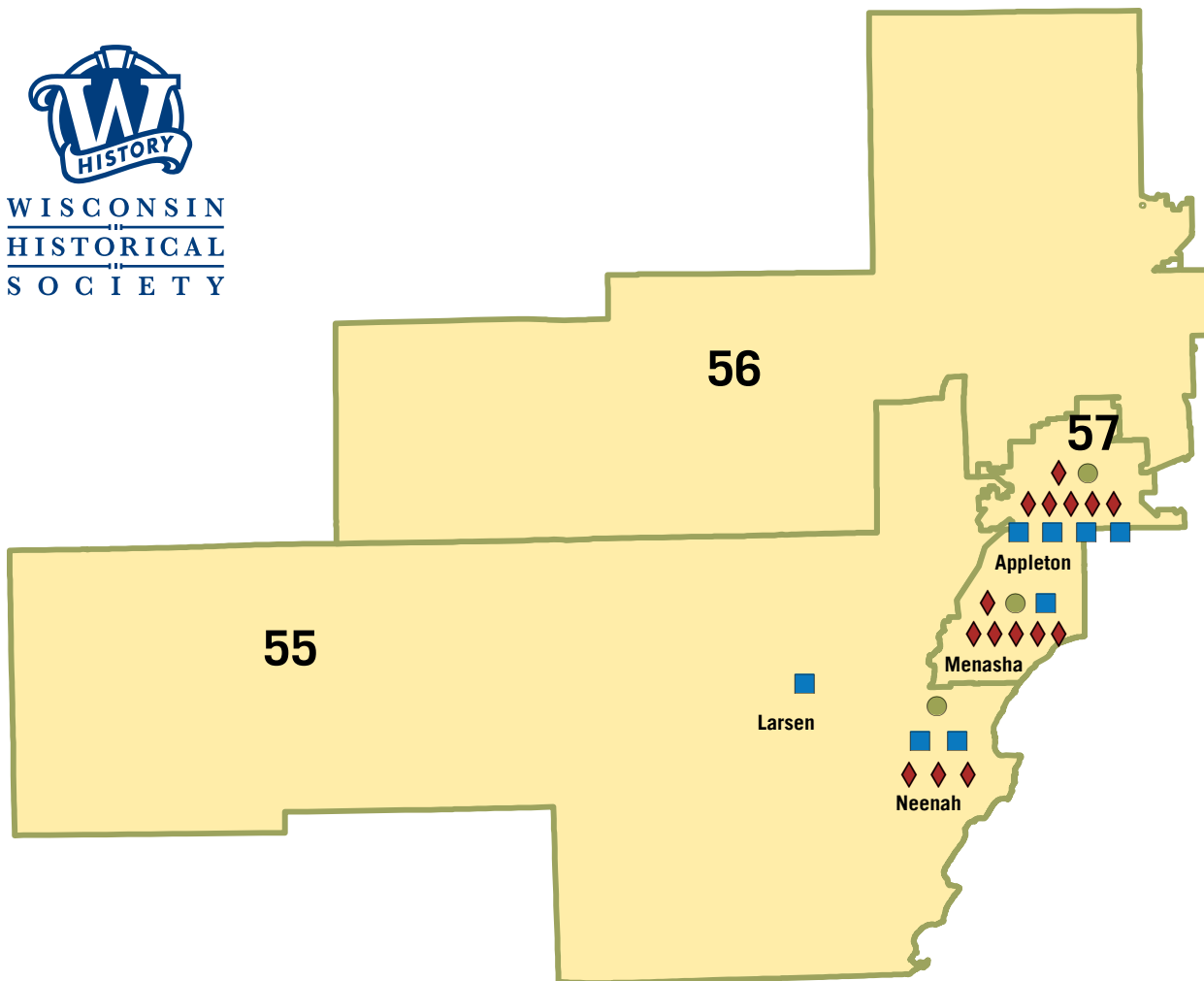
SOURCES: WISCONSIN HISTORICAL SOCIETY, LEGISLATIVE TECHNOLOGY SERVICES BUREAU (LTSB), GOOGLE ANALYTICS

HOW WE SERVE YOUR DISTRICT

Society resources used in Wisconsin's
SENATE DISTRICT 19
ASSEMBLY DISTRICTS 55-57



- Local Affiliates
- Outreach Services
- Schools Visiting Museums or Historic Sites



Due to the re-opening of sites and programming after COVID-19, operations at the Society and outreach across the state are slowly continuing to return to normal service.

SOURCES: WISCONSIN HISTORICAL SOCIETY, LEGISLATIVE TECHNOLOGY SERVICES BUREAU (LTSB), GOOGLE ANALYTICS

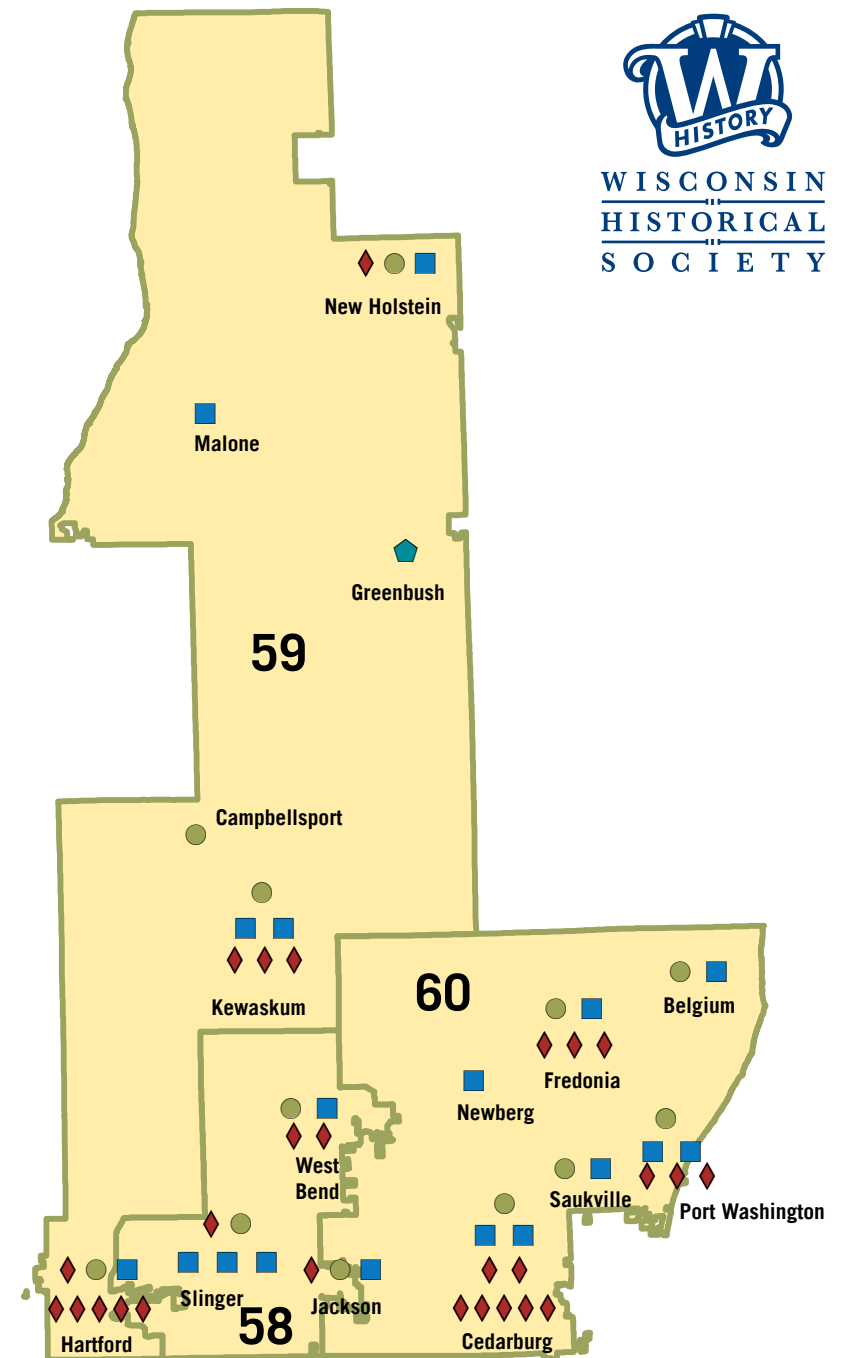
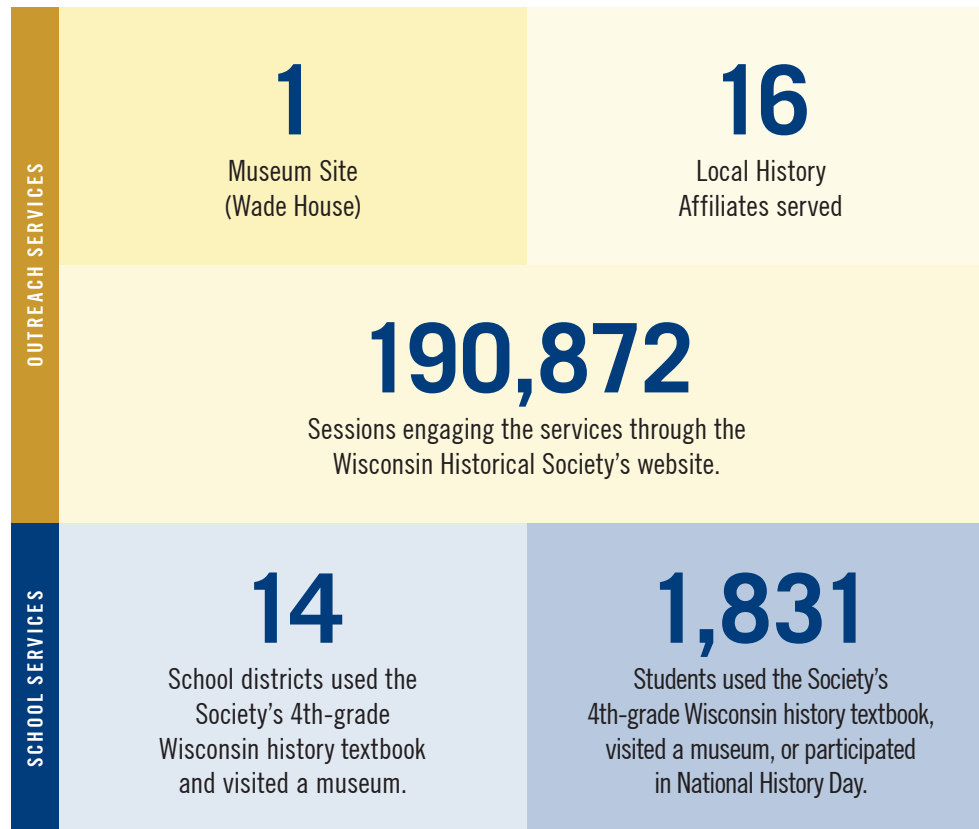
HOW WE SERVE YOUR DISTRICT



Society resources used in Wisconsin's

SENATE DISTRICT 20 | ASSEMBLY DISTRICTS 58-60

- Local Affiliates
- Schools Visiting Museums or Historic Sites
- Outreach Services
- Society Museum or Historic Site



Due to the re-opening of sites and programming after COVID-19, operations at the Society and outreach across the state are slowly continuing to return to normal service.

SOURCES: WISCONSIN HISTORICAL SOCIETY, LEGISLATIVE TECHNOLOGY SERVICES BUREAU (LTSB), GOOGLE ANALYTICS

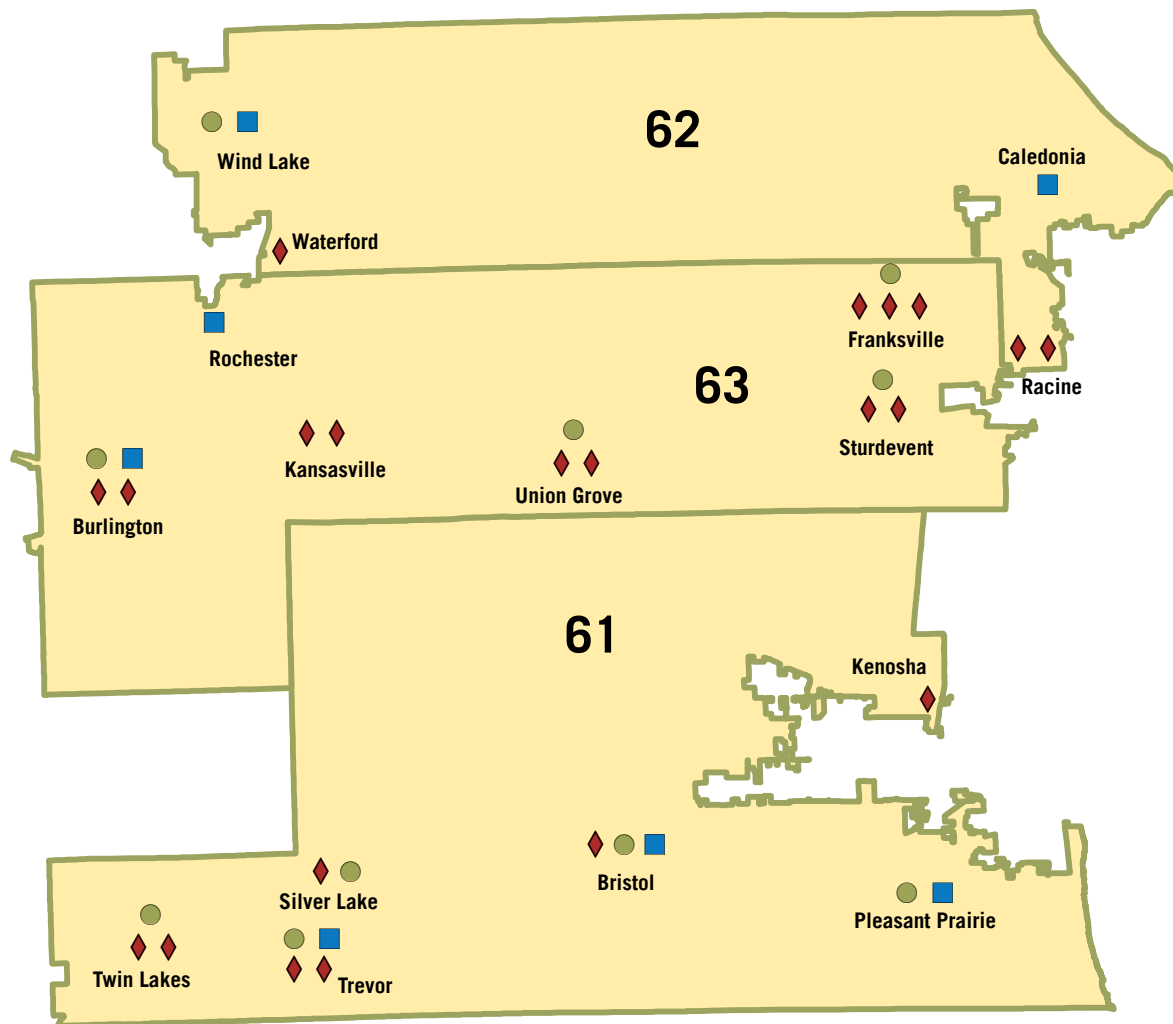
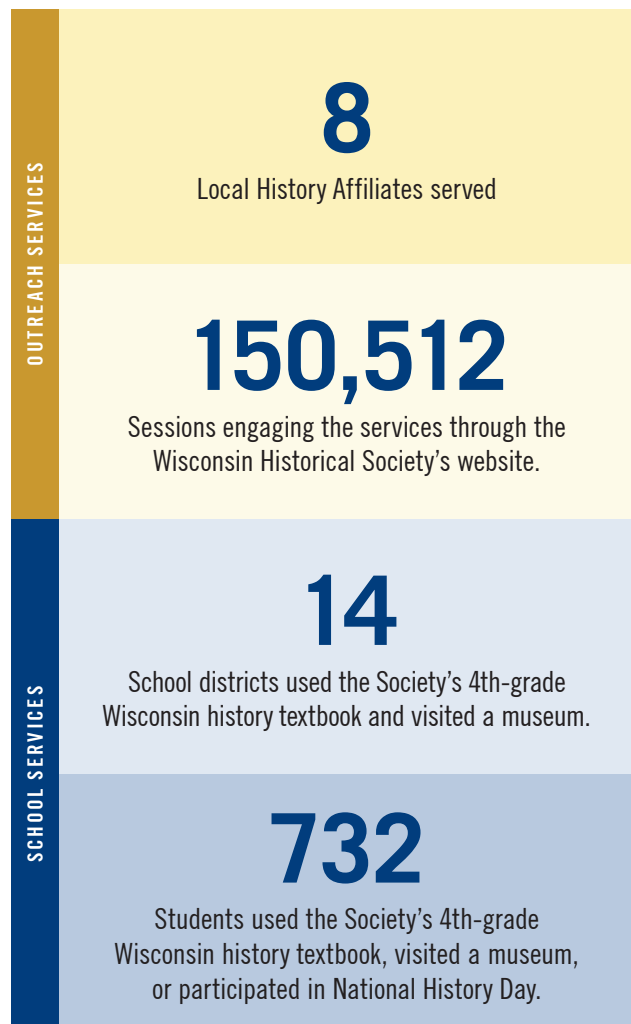
HOW WE SERVE YOUR DISTRICT



WISCONSIN
HISTORICAL
SOCIETY

Society resources used in Wisconsin's
SENATE DISTRICT 21
ASSEMBLY DISTRICTS 61-63

- Local Affiliates
- Outreach Services
- Schools Visiting Museums or Historic Sites



Due to the re-opening of sites and programming after COVID-19, operations at the Society and outreach across the state are slowly continuing to return to normal service.

SOURCES: WISCONSIN HISTORICAL SOCIETY, LEGISLATIVE TECHNOLOGY SERVICES BUREAU (LTSB), GOOGLE ANALYTICS

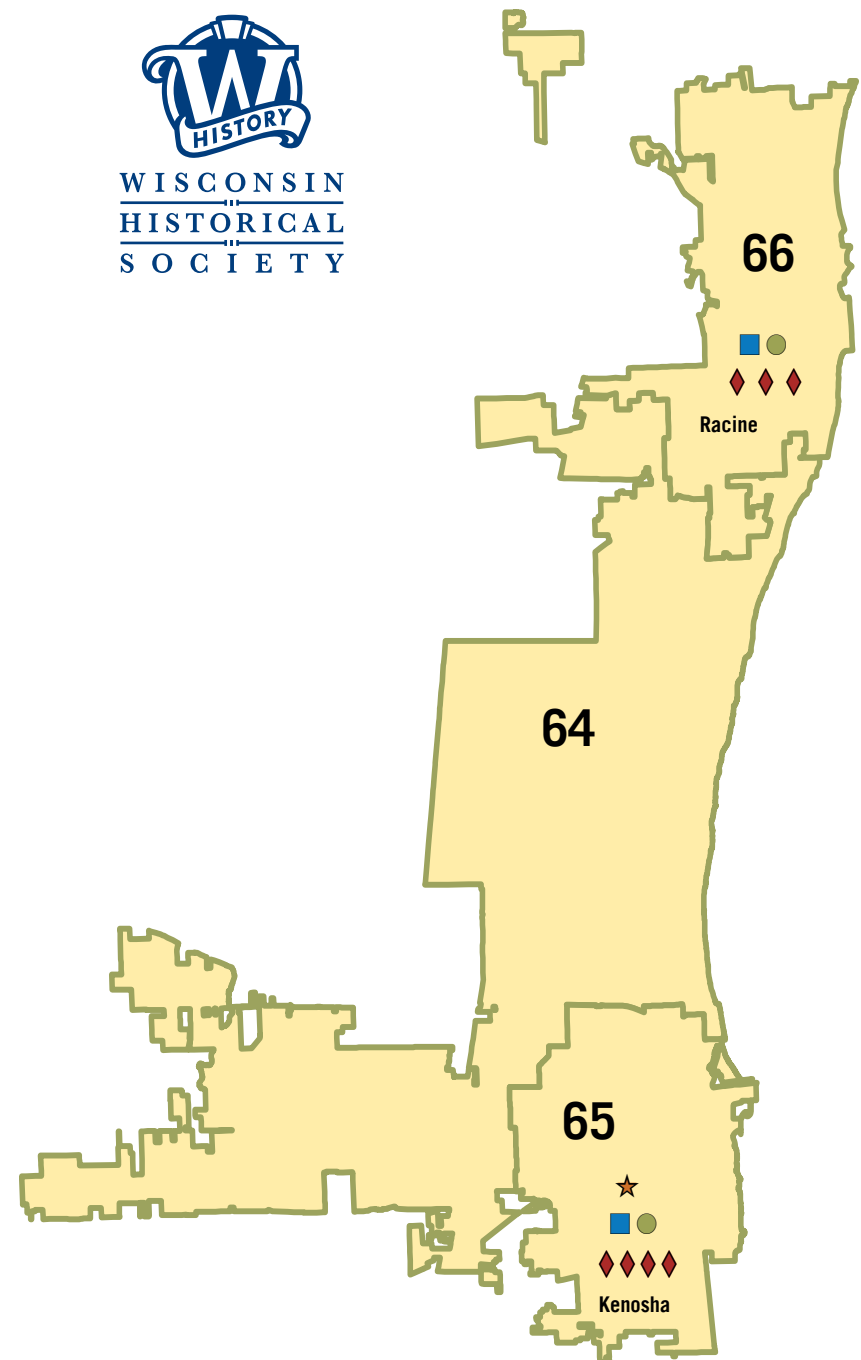
HOW WE SERVE YOUR DISTRICT



Society resources used in Wisconsin's

SENATE DISTRICT 22 | ASSEMBLY DISTRICTS 64-66

- Local Affiliates ◆ Schools Visiting Museums or Historic Sites
- Outreach Services ★ Area Research Center



Due to the re-opening of sites and programming after COVID-19, operations at the Society and outreach across the state are slowly continuing to return to normal service.

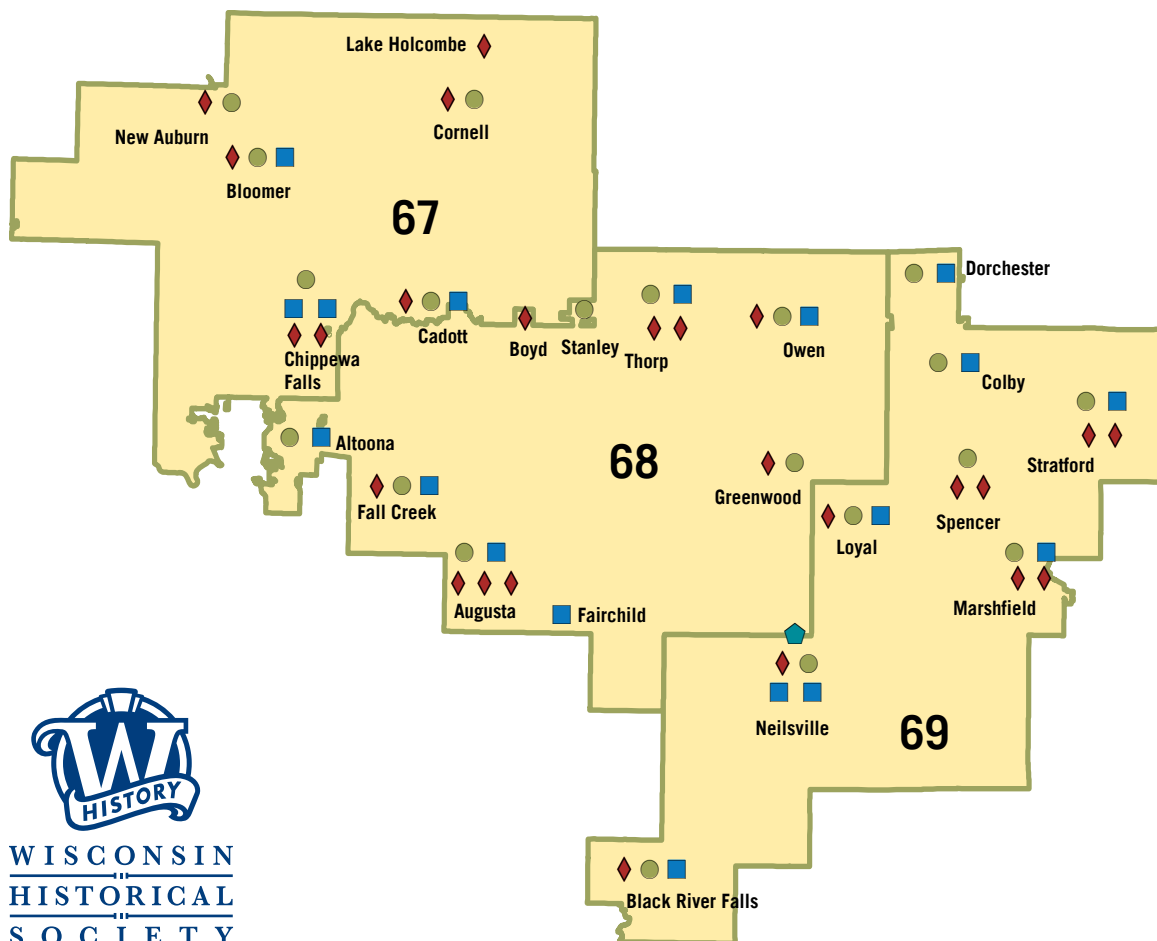
SOURCES: WISCONSIN HISTORICAL SOCIETY, LEGISLATIVE TECHNOLOGY SERVICES BUREAU (LTSB), GOOGLE ANALYTICS

HOW WE SERVE YOUR DISTRICT

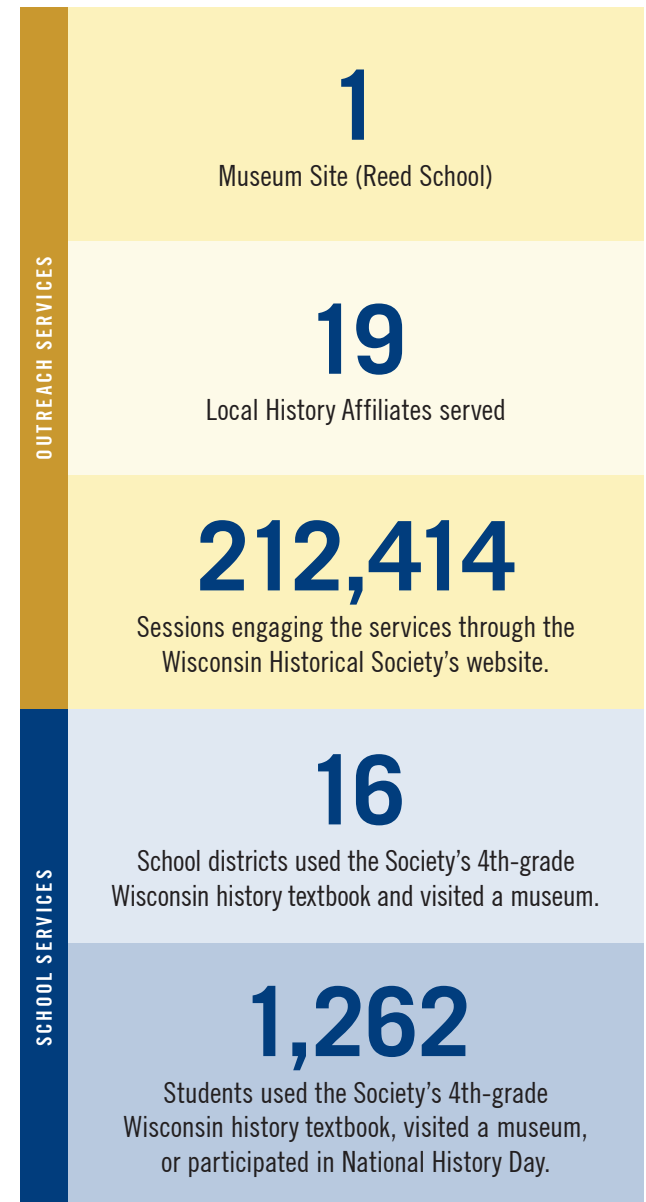
Society resources used in Wisconsin's

SENATE DISTRICT 23 | ASSEMBLY DISTRICTS 67-69

- Local Affiliates
- ◆ Schools Visiting Museums or Historic Sites
- Outreach Services
- ◆ Society Museum or Historic Site



WISCONSIN
HISTORICAL
SOCIETY



Due to the re-opening of sites and programming after COVID-19, operations at the Society and outreach across the state are slowly continuing to return to normal service.

SOURCES: WISCONSIN HISTORICAL SOCIETY, LEGISLATIVE TECHNOLOGY SERVICES BUREAU (LTSB), GOOGLE ANALYTICS

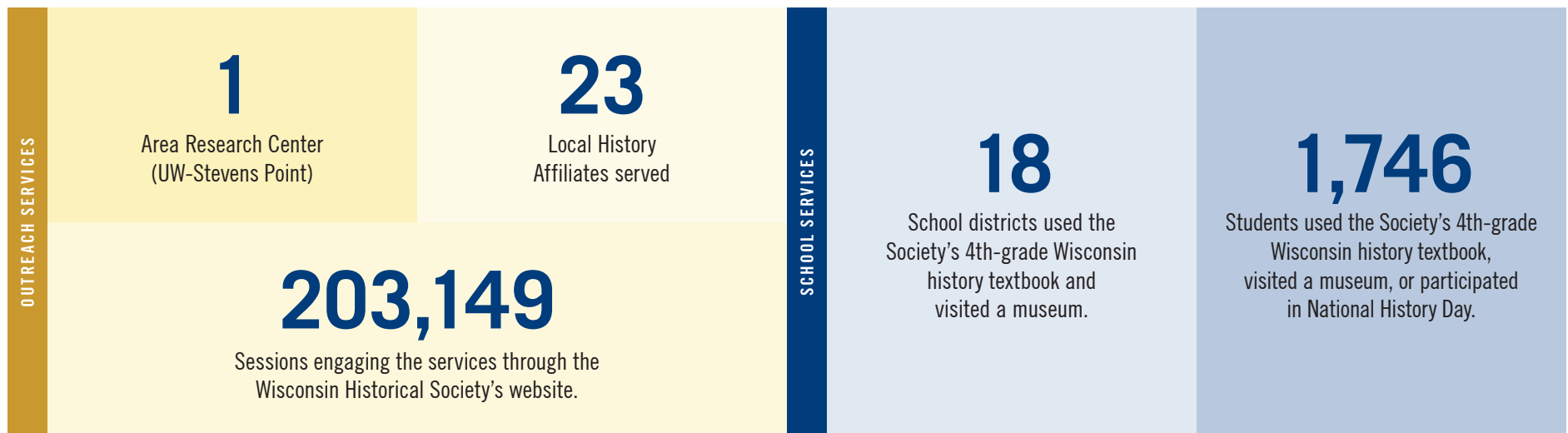
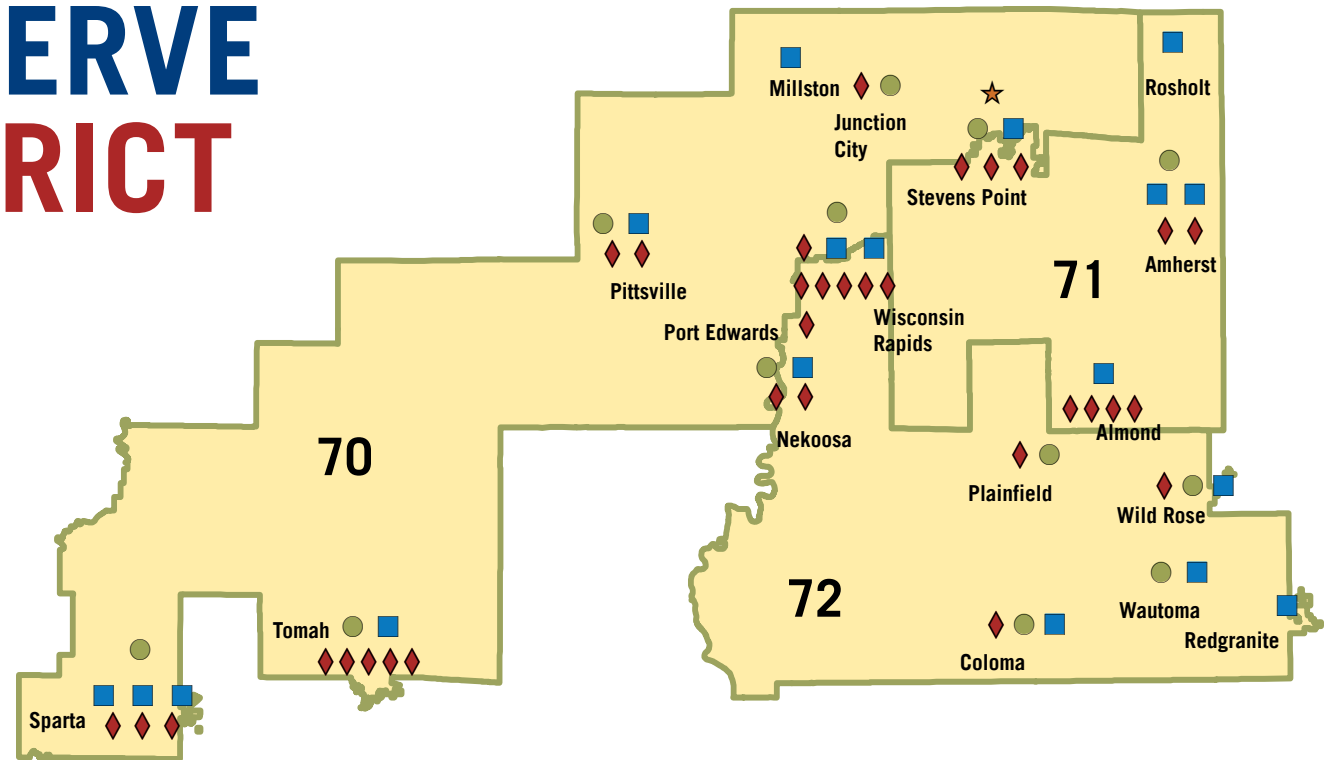
HOW WE SERVE YOUR DISTRICT

Society resources used in Wisconsin's
SENATE DISTRICT 24
ASSEMBLY DISTRICTS 70-72

- Local Affiliates
- Outreach Services
- ◆ Schools Visiting Museums or Historic Sites
- ★ Area Research Center



WISCONSIN
HISTORICAL
SOCIETY



Due to the re-opening of sites and programming after COVID-19, operations at the Society and outreach across the state are slowly continuing to return to normal service.

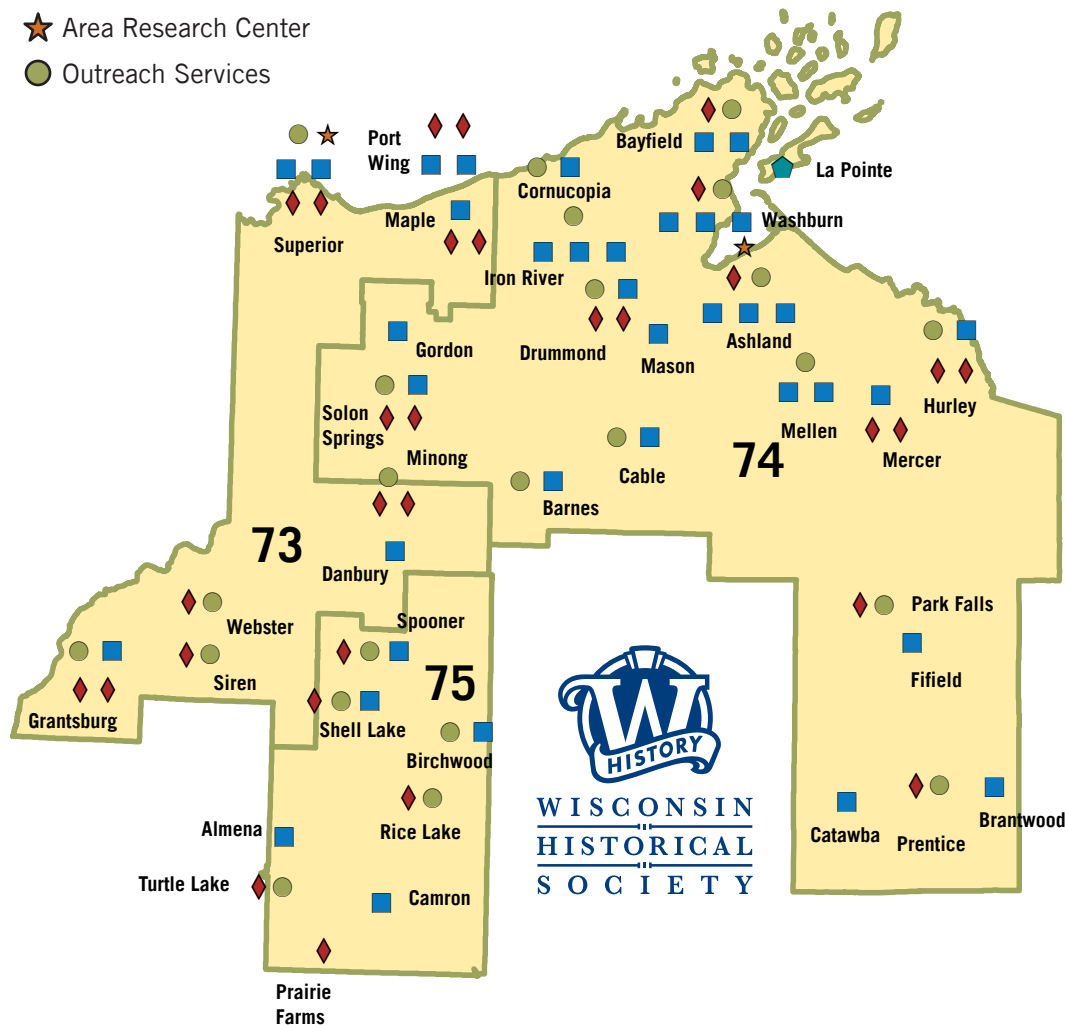
SOURCES: WISCONSIN HISTORICAL SOCIETY, LEGISLATIVE TECHNOLOGY SERVICES BUREAU (LTSB), GOOGLE ANALYTICS

HOW WE SERVE YOUR DISTRICT

Society resources used in Wisconsin's

SENATE DISTRICT 25 | ASSEMBLY DISTRICTS 73-75

- Local Affiliates
- ◆ Schools Visiting Museums or Historic Sites
- ◆ Society Museum or Historic Site
- ★ Area Research Center
- Outreach Services



OUTREACH SERVICES	<p>1</p> <p>Museum Site (Madeline Island)</p>	<p>2</p> <p>Area Research Centers (UW-Superior, Northwoods Area Research Center)</p>
	<p>36</p> <p>Local History Affiliates served</p>	<p>173,771</p> <p>Sessions engaging the services through the Wisconsin Historical Society's website.</p>
SCHOOL SERVICES	<p>25</p> <p>School districts used the Society's 4th-grade Wisconsin history textbook and visited a museum.</p>	<p>1,648</p> <p>Students used the Society's 4th-grade Wisconsin history textbook, visited a museum, or participated in National History Day.</p>

Due to the re-opening of sites and programming after COVID-19, operations at the Society and outreach across the state are slowly continuing to return to normal service.

SOURCES: WISCONSIN HISTORICAL SOCIETY, LEGISLATIVE TECHNOLOGY SERVICES BUREAU (LTSB), GOOGLE ANALYTICS

HOW WE SERVE YOUR DISTRICT

Society resources used in Wisconsin's

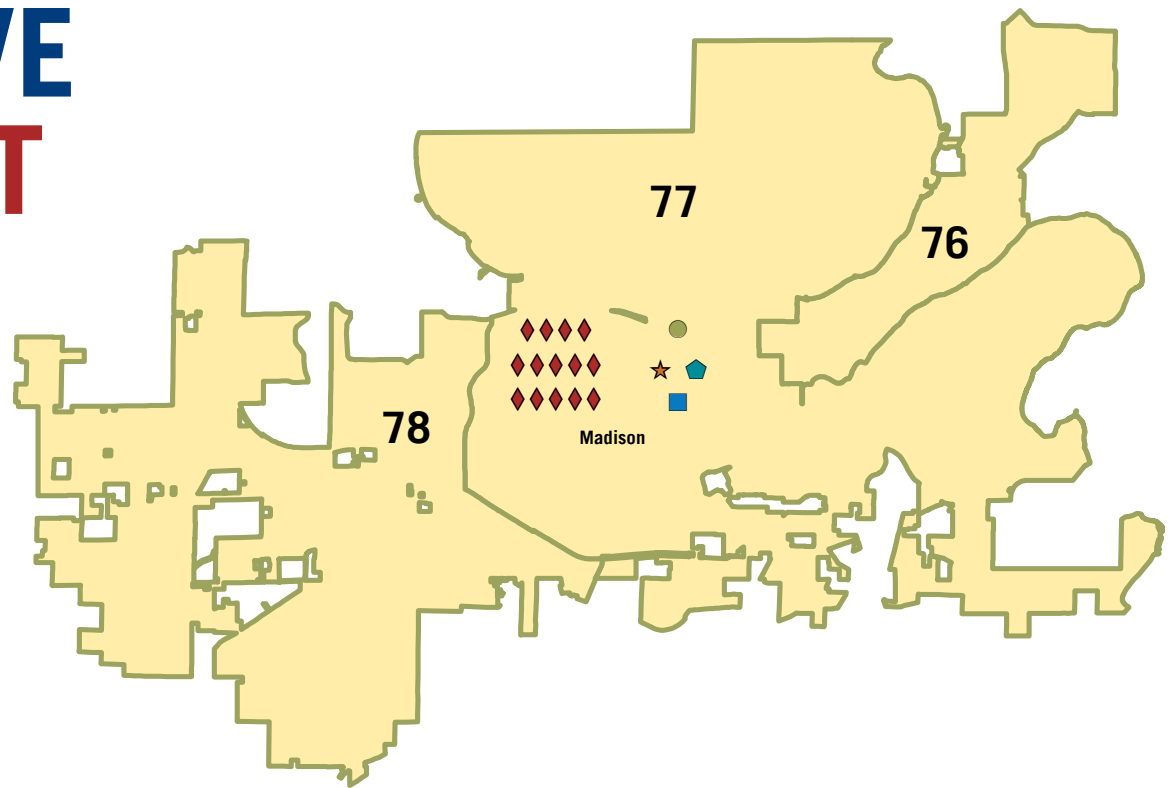
SENATE DISTRICT 26

ASSEMBLY DISTRICTS 76-78

- Local Affiliates ● Outreach Services
- ◆ Schools Visiting Museums or Historic Sites
- Society Museum or Historic Site
- ★ Area Research Center



WISCONSIN
HISTORICAL
SOCIETY



Due to the re-opening of sites and programming after COVID-19, operations at the Society and outreach across the state are slowly continuing to return to normal service.

SOURCES: WISCONSIN HISTORICAL SOCIETY, LEGISLATIVE TECHNOLOGY SERVICES BUREAU (LTSB), GOOGLE ANALYTICS

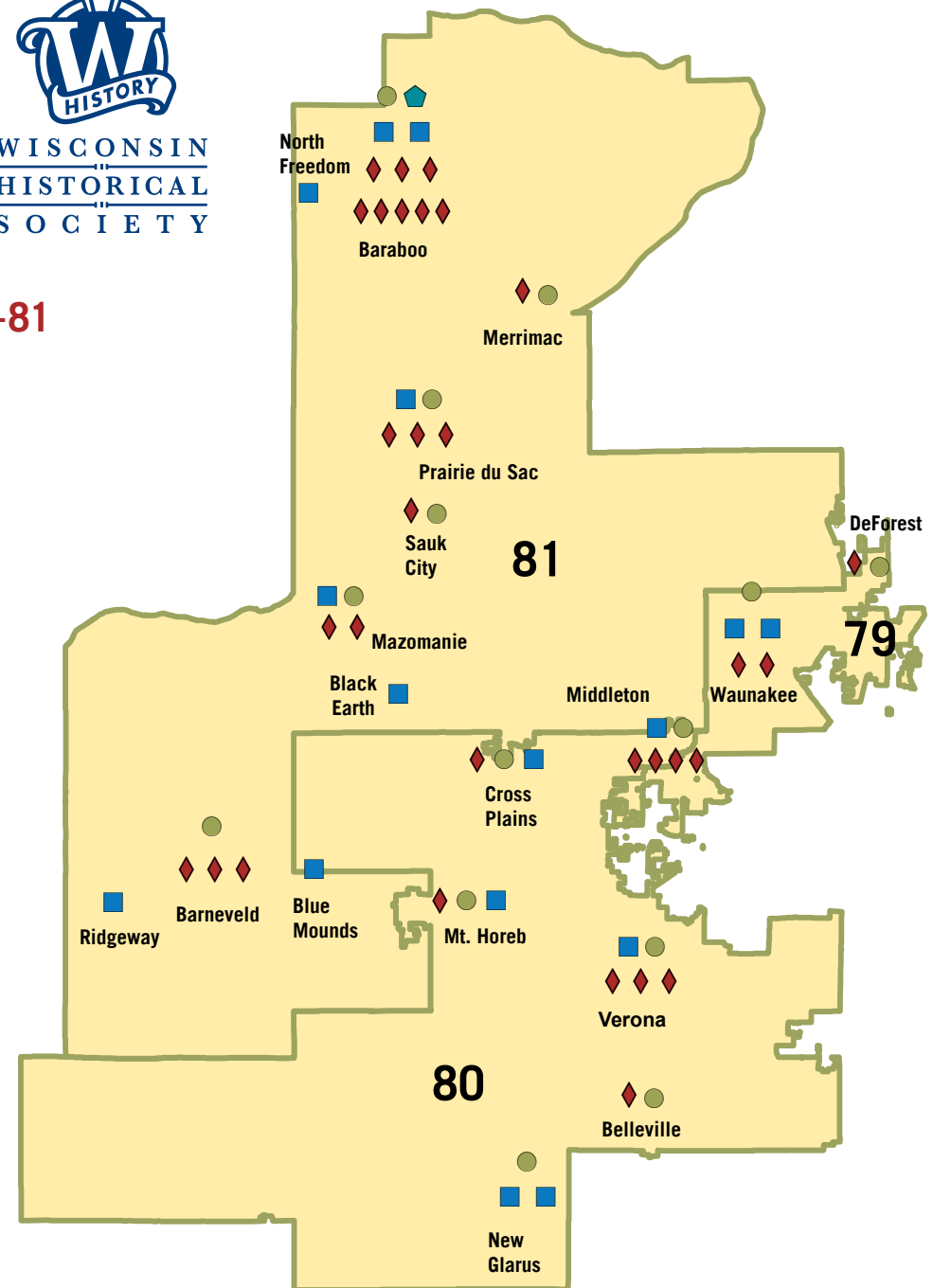
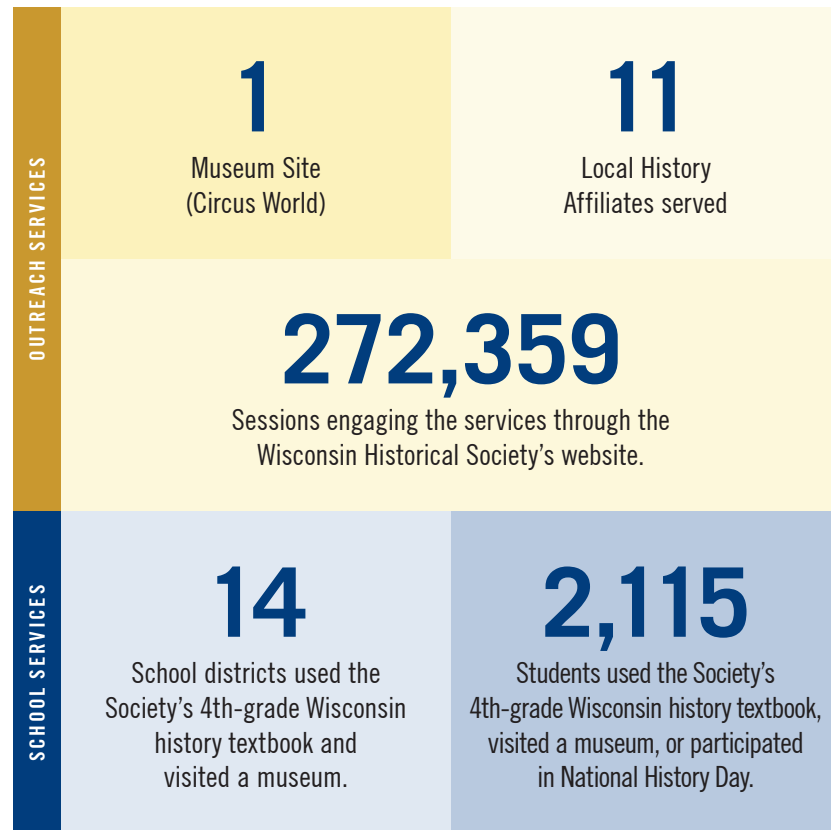
HOW WE SERVE YOUR DISTRICT



Society resources used in Wisconsin's

SENATE DISTRICT 27 | ASSEMBLY DISTRICTS 79-81

- Local Affiliates
- ◆ Schools Visiting Museums or Historic Sites
- Outreach Services
- ◆ Society Museum or Historic Site



Due to the re-opening of sites and programming after COVID-19, operations at the Society and outreach across the state are slowly continuing to return to normal service.

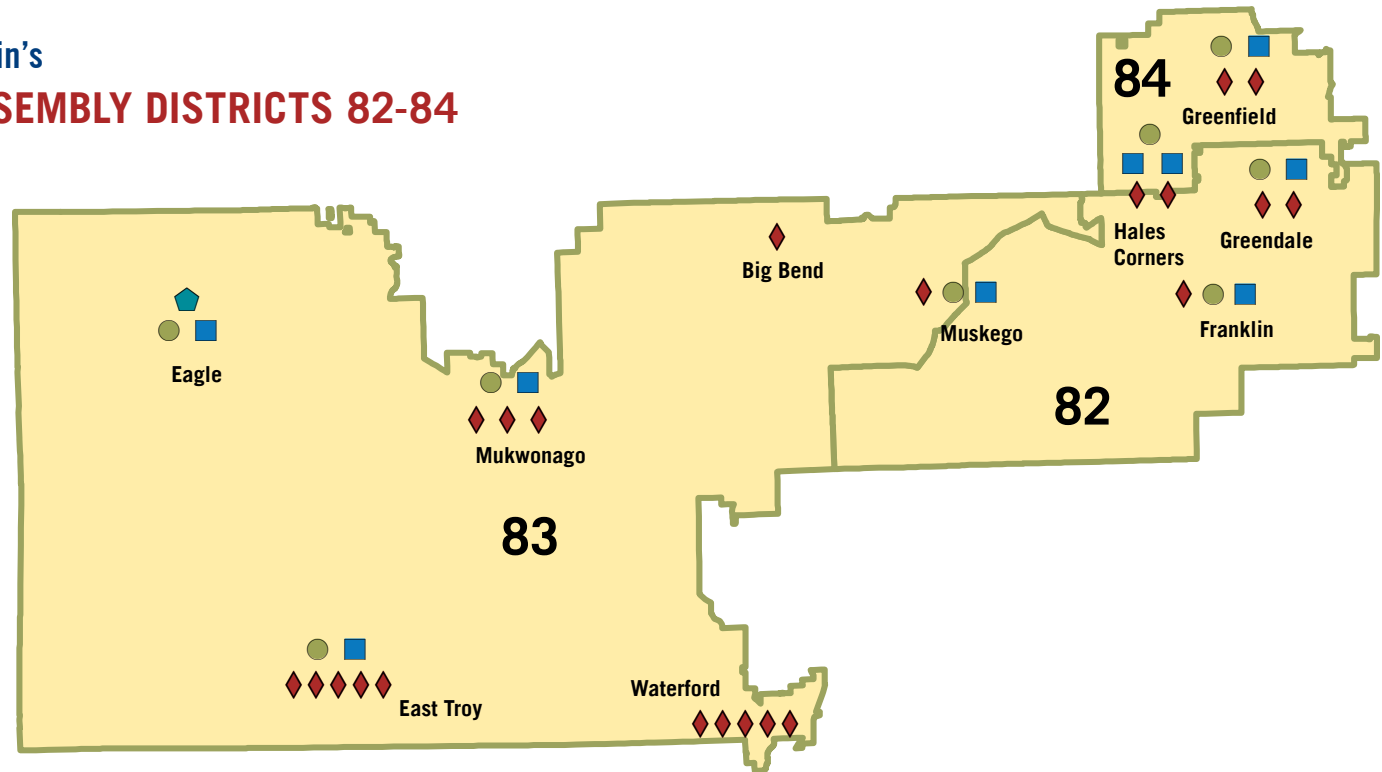
SOURCES: WISCONSIN HISTORICAL SOCIETY, LEGISLATIVE TECHNOLOGY SERVICES BUREAU (LTSB), GOOGLE ANALYTICS

HOW WE SERVE YOUR DISTRICT

Society resources used in Wisconsin's

SENATE DISTRICT 28 | ASSEMBLY DISTRICTS 82-84

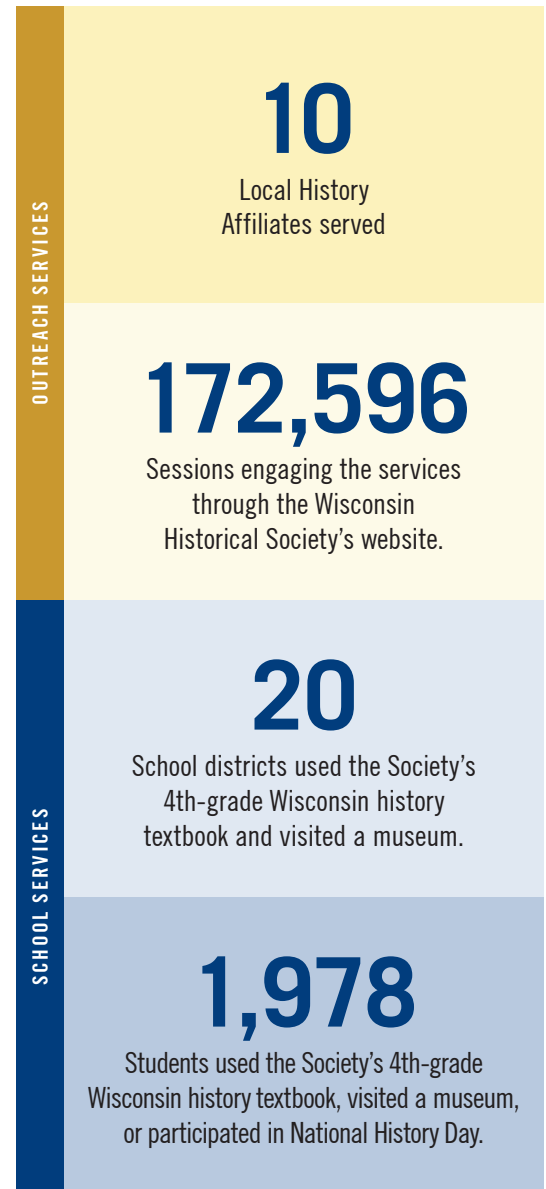
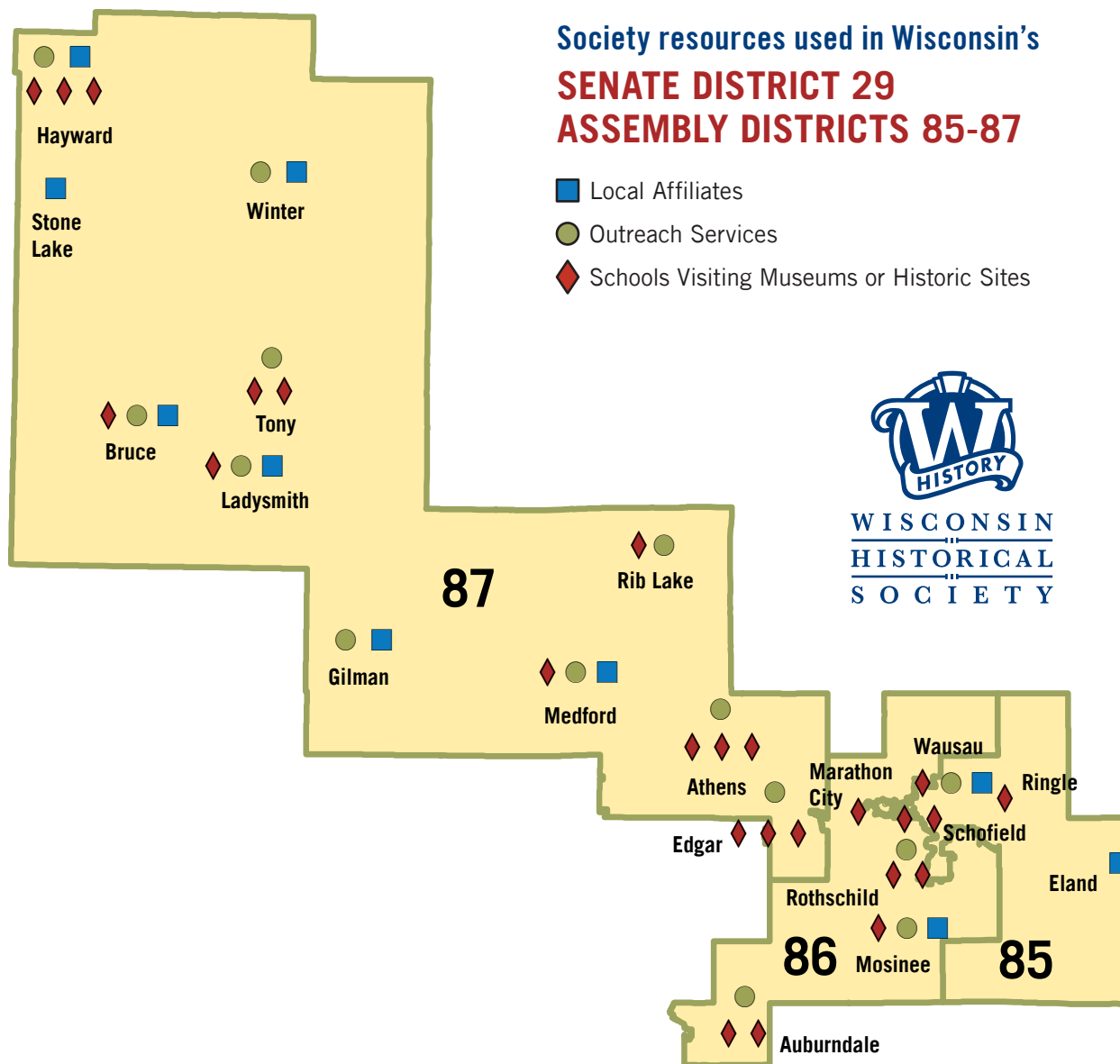
- Local Affiliates
- Outreach Services
- ◆ Schools Visiting Museums or Historic Sites
- ◆ Society Museum or Historic Site



Due to the re-opening of sites and programming after COVID-19, operations at the Society and outreach across the state are slowly continuing to return to normal service.

SOURCES: WISCONSIN HISTORICAL SOCIETY, LEGISLATIVE TECHNOLOGY SERVICES BUREAU (LTSB), GOOGLE ANALYTICS

HOW WE SERVE YOUR DISTRICT



Due to the re-opening of sites and programming after COVID-19, operations at the Society and outreach across the state are slowly continuing to return to normal service.

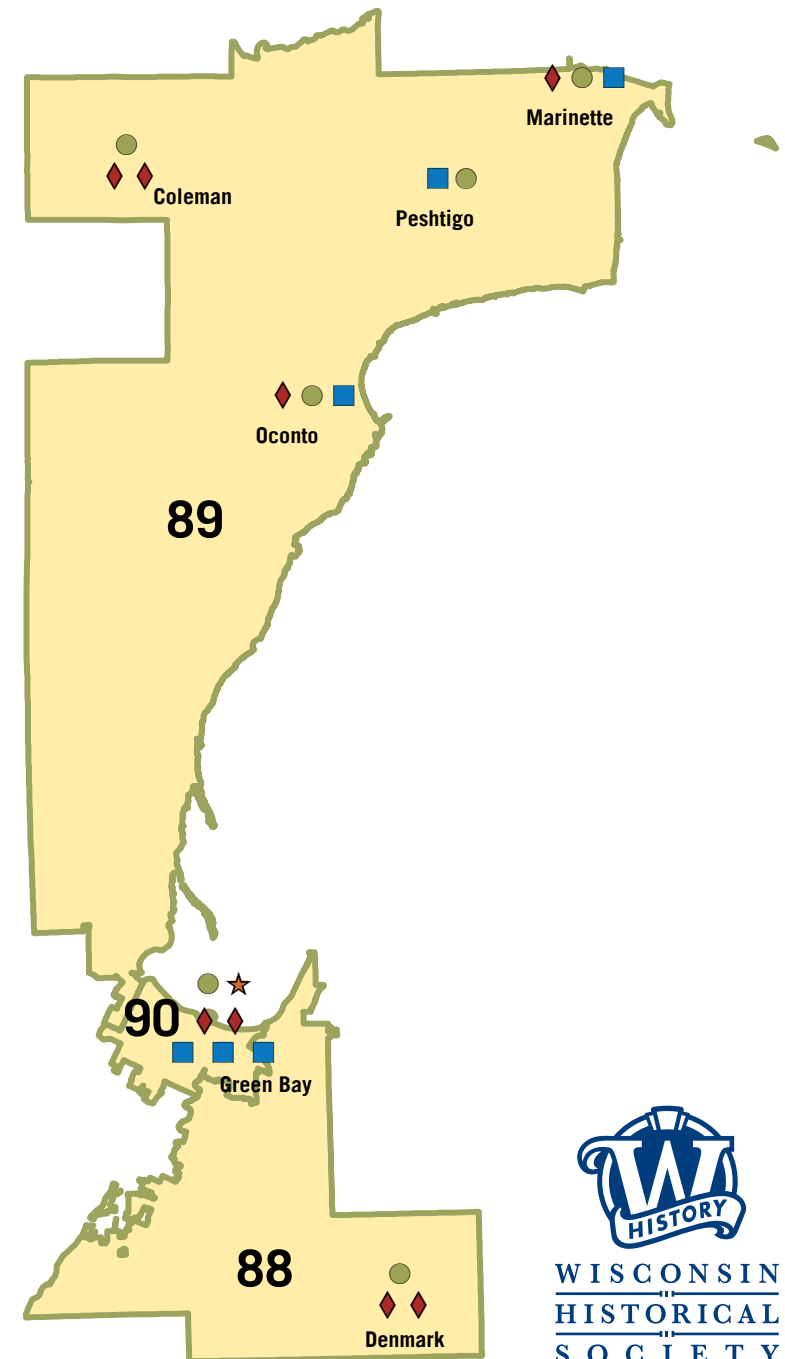
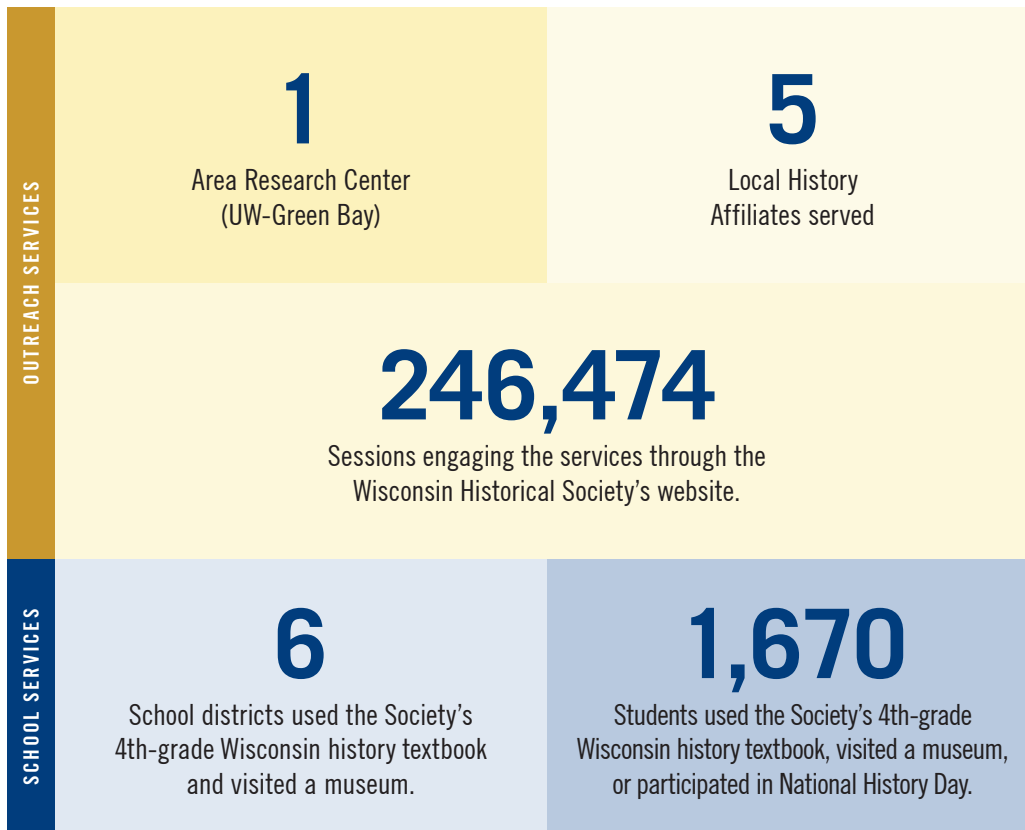
SOURCES: WISCONSIN HISTORICAL SOCIETY, LEGISLATIVE TECHNOLOGY SERVICES BUREAU (LTSB), GOOGLE ANALYTICS

HOW WE SERVE YOUR DISTRICT

Society resources used in Wisconsin's

SENATE DISTRICT 30 | ASSEMBLY DISTRICTS 88-90

- Local Affiliates ● Outreach Services ★ Area Research Center
- ◆ Schools Visiting Museums or Historic Sites



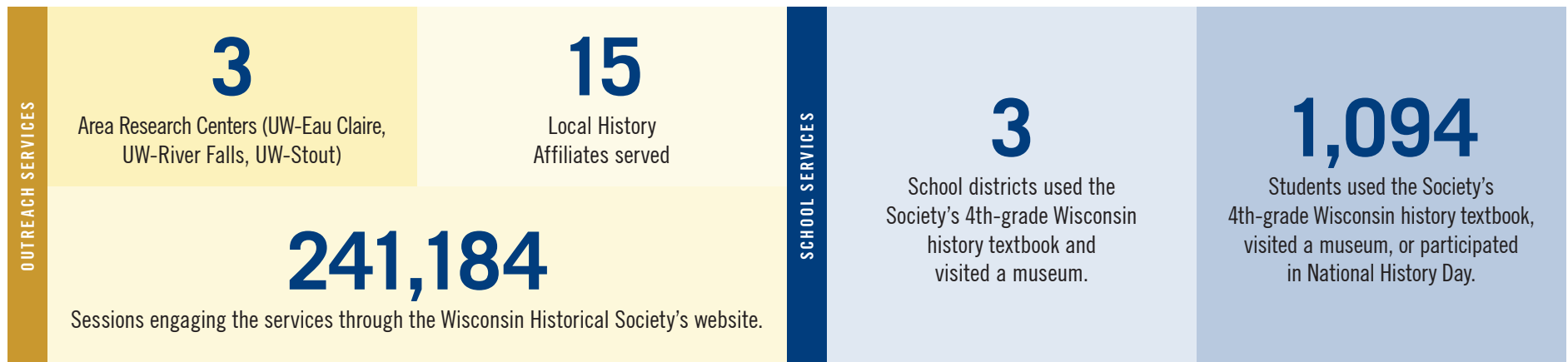
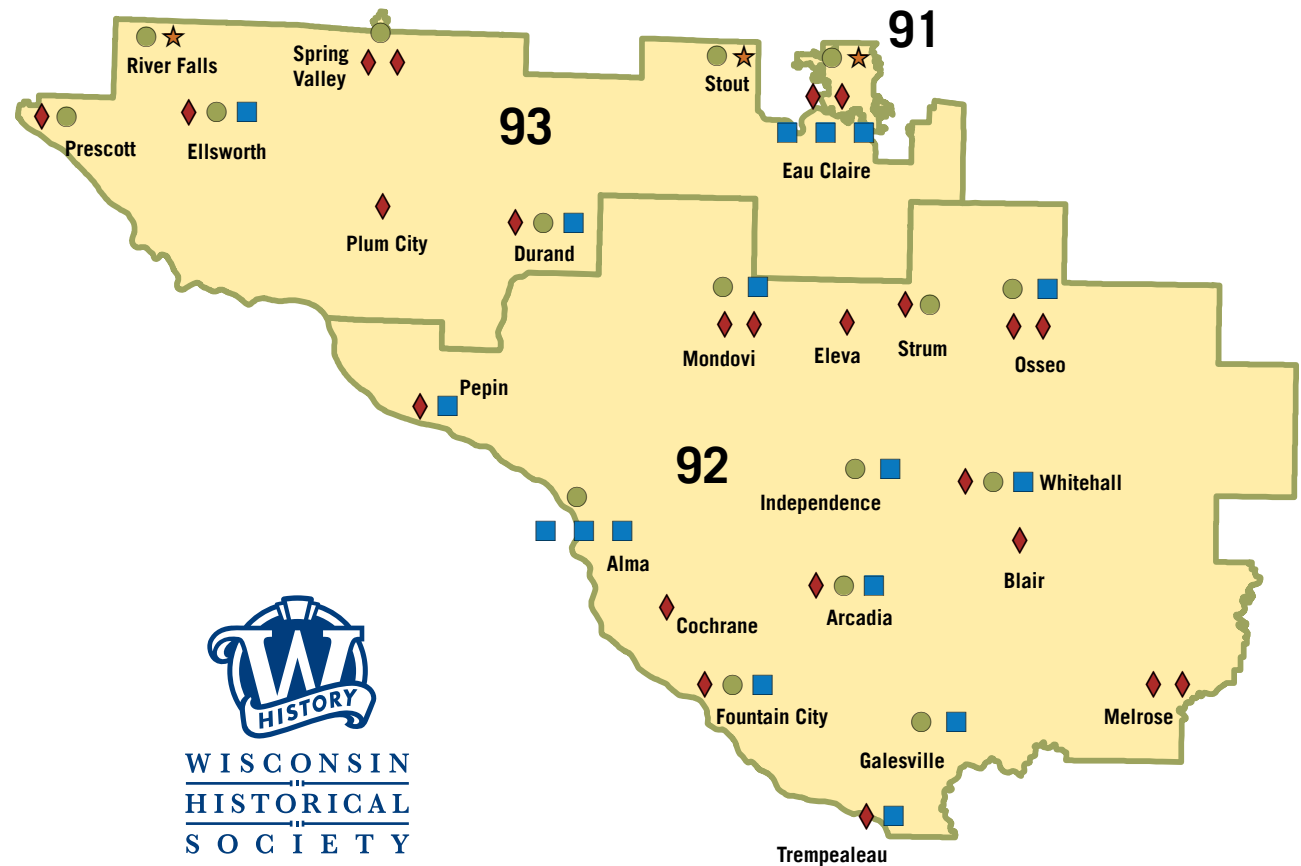
Due to the re-opening of sites and programming after COVID-19, operations at the Society and outreach across the state are slowly continuing to return to normal service.

SOURCES: WISCONSIN HISTORICAL SOCIETY, LEGISLATIVE TECHNOLOGY SERVICES BUREAU (LTSB), GOOGLE ANALYTICS

HOW WE SERVE YOUR DISTRICT

Society resources used in Wisconsin's
SENATE DISTRICT 31
ASSEMBLY DISTRICTS 91-93

- Local Affiliates
- Outreach Services
- ◆ Schools Visiting Museums or Historic Sites
- ★ Area Research Center



Due to the re-opening of sites and programming after COVID-19, operations at the Society and outreach across the state are slowly continuing to return to normal service.

SOURCES: WISCONSIN HISTORICAL SOCIETY, LEGISLATIVE TECHNOLOGY SERVICES BUREAU (LTSB), GOOGLE ANALYTICS

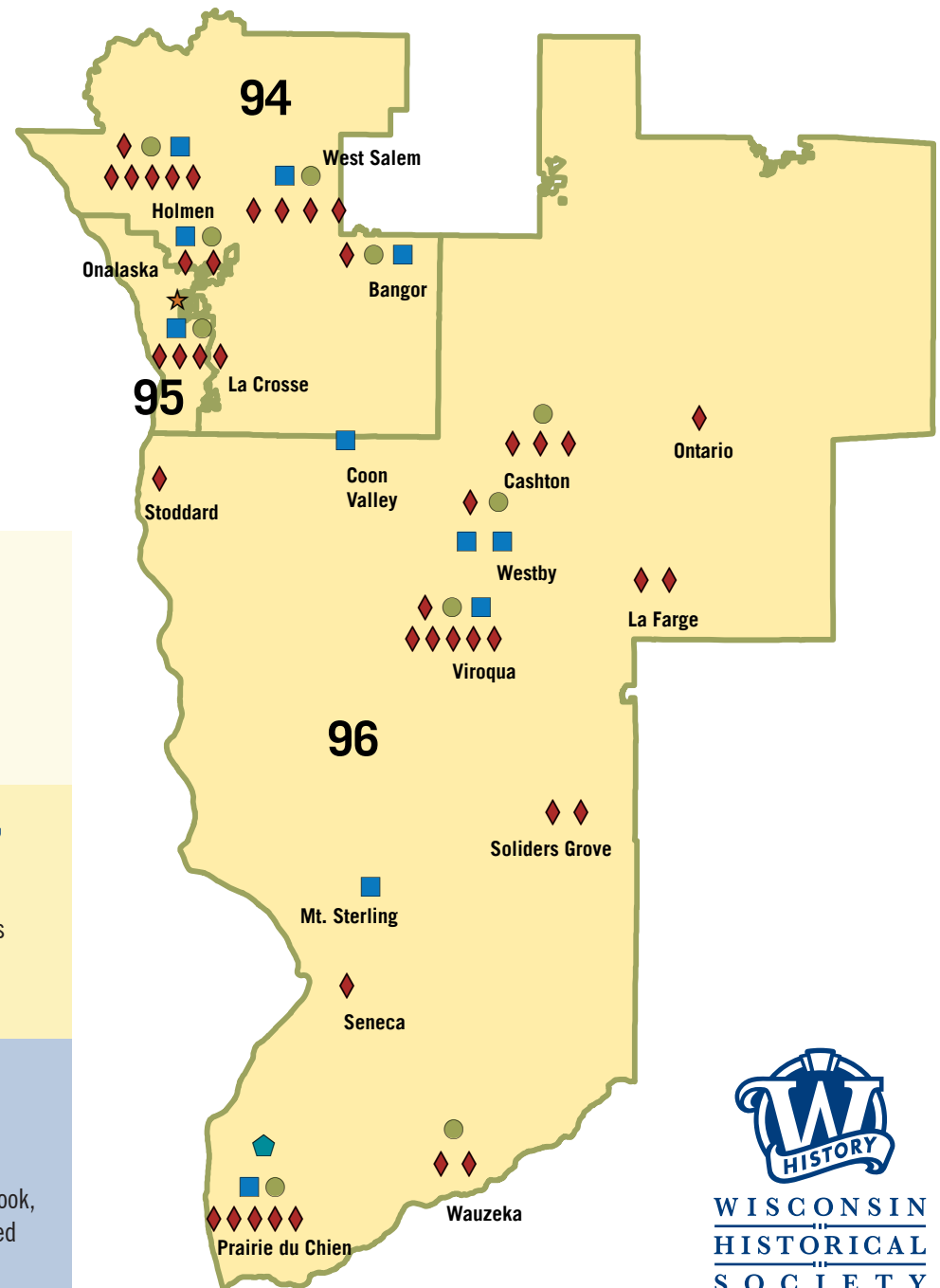
HOW WE SERVE YOUR DISTRICT

Society resources used in Wisconsin's

SENATE DISTRICT 32 | ASSEMBLY DISTRICTS 94-96

- Local Affiliates ★ Area Research Center
- Outreach Services ◆ Society Museum or Historic Site
- ◆ Schools Visiting Museums or Historic Sites

OUTREACH SERVICES	1 Area Research Center (UW-La Crosse)	1 Museum Site (Vilia Louis)
	9 Local History Affiliates served	125,197 Sessions engaging the services through the Wisconsin Historical Society's website.
SCHOOL SERVICES	18 School districts used the Society's 4th-grade Wisconsin history textbook and visited a museum.	2,279 Students used the Society's 4th-grade Wisconsin history textbook, visited a museum, or participated in National History Day.



**WISCONSIN
HISTORICAL
SOCIETY**

Due to the re-opening of sites and programming after COVID-19, operations at the Society and outreach across the state are slowly continuing to return to normal service.

SOURCES: WISCONSIN HISTORICAL SOCIETY, LEGISLATIVE TECHNOLOGY SERVICES BUREAU (LTSB), GOOGLE ANALYTICS

HOW WE SERVE YOUR DISTRICT



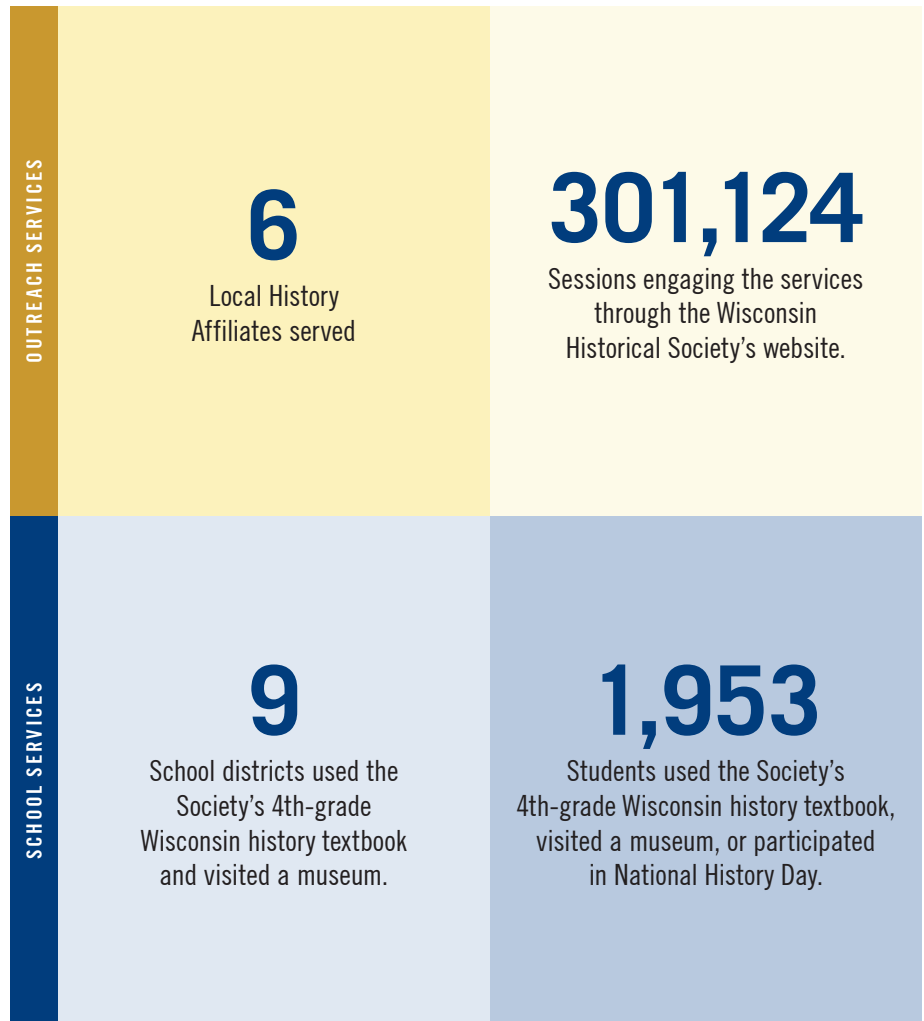
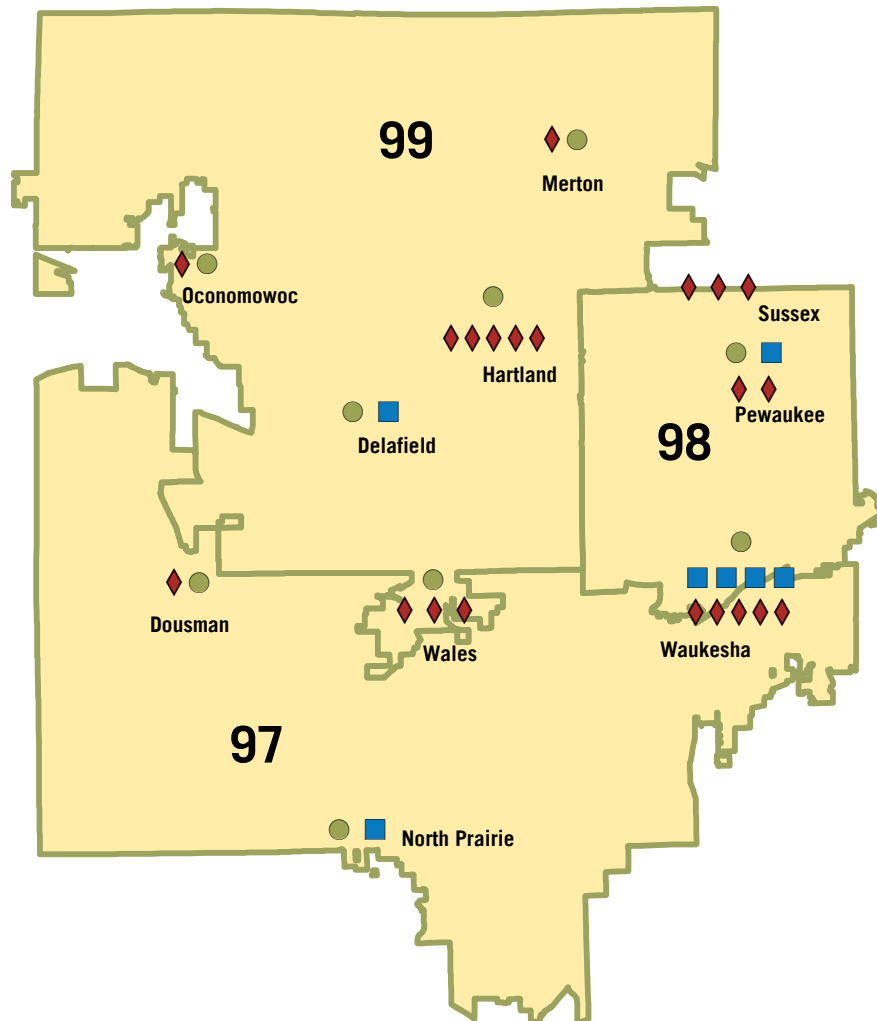
WISCONSIN
HISTORICAL
SOCIETY

Society resources used in Wisconsin's

SENATE DISTRICT 33

ASSEMBLY DISTRICTS 97-99

- Local Affiliates
- Outreach Services
- Schools Visiting Museums or Historic Sites



Due to the re-opening of sites and programming after COVID-19, operations at the Society and outreach across the state are slowly continuing to return to normal service.

SOURCES: WISCONSIN HISTORICAL SOCIETY, LEGISLATIVE TECHNOLOGY SERVICES BUREAU (LTSB), GOOGLE ANALYTICS